



## 6 Loretta Way Aintree VIC

3 2 2

### Features Include:

- ? Master bedroom with walk-in wardrobe and ensuite
  - ? Additional two spacious bedrooms with built-in wardrobes
  - ? The open plan kitchen is located perfectly to incorporate the meals and family area
  - ? Kitchen complete with ample cupboard space, stainless steel appliances including gas cook top, electric oven, range hood and double sink
  - ? Ducted heating, evaporative cooling, high ceilings, two toilets, professional landscaped gardens
  - ? Double car garage on remote with internal access
- Fantastic location with all amenities nearby including Bacchus Marsh Grammar School, Woodlea Town Centre, public transport, western highway and walking tracks/reserves/park lands.

Arranging an Inspection couldn't be easier. To book a time,

**Land Size** : 262 sqm

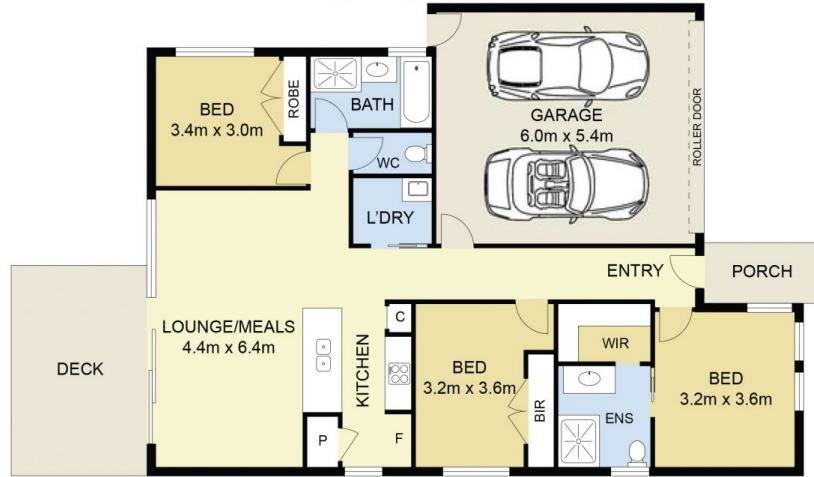
**View** : <https://www.ypa.com.au/7793644>



**Sal Kamcev**  
03 9363 1455



SITE PLAN  
(NOT TO SCALE)



6 Loretta Way, Aintree



DISCLAIMER : ALL DIMENSIONS ARE AN APPROXIMATION ONLY AND NO GUARANTEE IS GIVEN WITH RESPECT TO ACCURACY.