

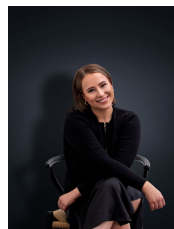


1 Hutton Road Werribee VIC

3 2 2

Perfectly kept with a gorgeous facade, describes the tip of this "as new" three-bedroom, two-bathroom open plan exceptional home located in the beautiful Cornerstone Estate in Werribee, overlooking the lake. Walk down the hall and embrace the abundance of natural light coming through the windows and into a well-proportioned kitchen with stone bench tops and stainless-steel appliances. Flowing on seamlessly into the mixed formal living and dining areas. Step into the low maintenance backyard or simply sit down and enjoy a coffee in the undercover alfresco. The master bedroom comes complete with stylish ensuite and WIR, with the further two spacious bedrooms being serviced by a neutral tone, beautifully kept bathroom. Enjoy quality hybrid flooring to traffic spaces and carpet to bedrooms, evaporative/split system cooling and ducted heating and double lock up automatic garage with internal access. Nearby Schools include Wyndham Vale Primary

View : <https://www.ypa.com.au/7807190>



Ali Dowling
0450 778 972