



57 Clarendon Avenue Craigieburn VIC

3  **2**  **2** 

Set your eyes upon a gem nestled in the top spot of Craigieburn. This gorgeous townhouse offers 3 spacious bedrooms, the master bedroom with walk in robe and en-suite, 2 bedrooms with (BIR) serviced by a light infused central bathroom and a generously sized modern kitchen servicing family living, dining and stainless-steel appliances.

Located only a hop, skip and jump to the Craigieburn Central Shopping Centre, Stockland's Shopping Centre, bus stops & Craigieburn train station. What a fantastic position. Extras include downlights, dishwasher, quality blinds, double car garage, ducted heating and split system cooling and much more! Nearby Schools - Willmott Park Primary School & Primary Mount Ridley P-12 College Government.

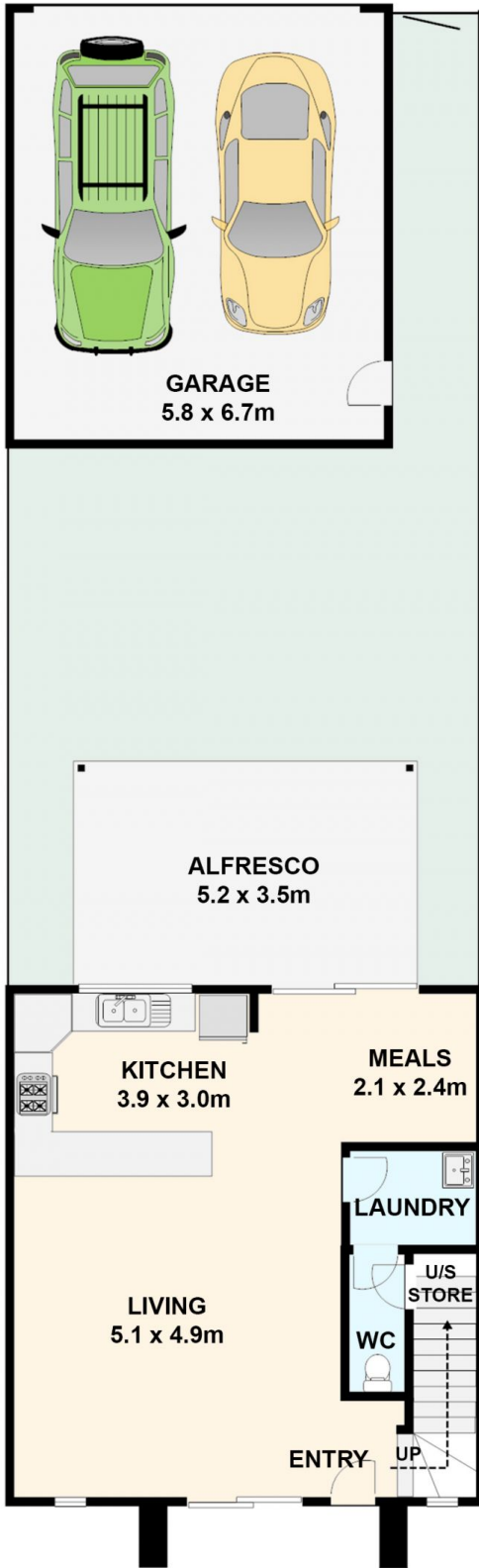
Price : \$ 510,000
Land Size : 210 sqm
View : <https://www.ypa.com.au/7827336>



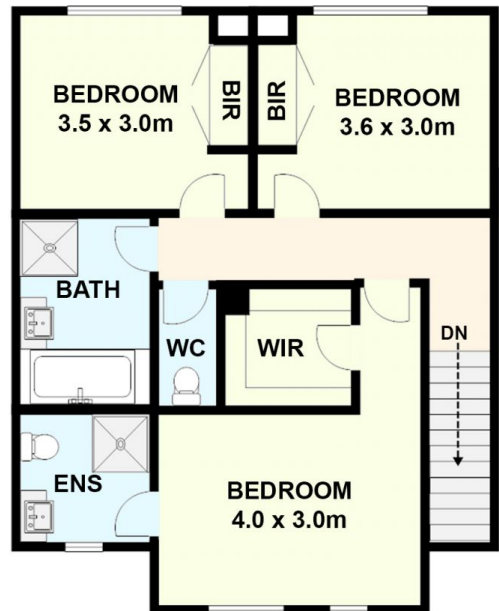
Khaled Khaled
0400 004 556



Eddi Bagdadi
0432 208 933



Upper Level



57 Clarendon Avenue, Craigieburn.

All data and dimensions shown in this sketch are approximate.