



## 175 Greaves Street North Werribee VIC

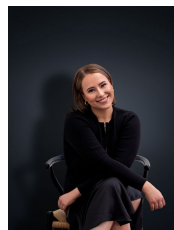
4 2 2

Nestled in a highly sought after pocket of Werribee located, it's just minutes away from Werribee CBD with its many restaurants and cafes, Werribee train station, the public transport network and Eagle Stadium.

**Land Size** : 375 sqm  
**View** : <https://www.ypa.com.au/7837536>

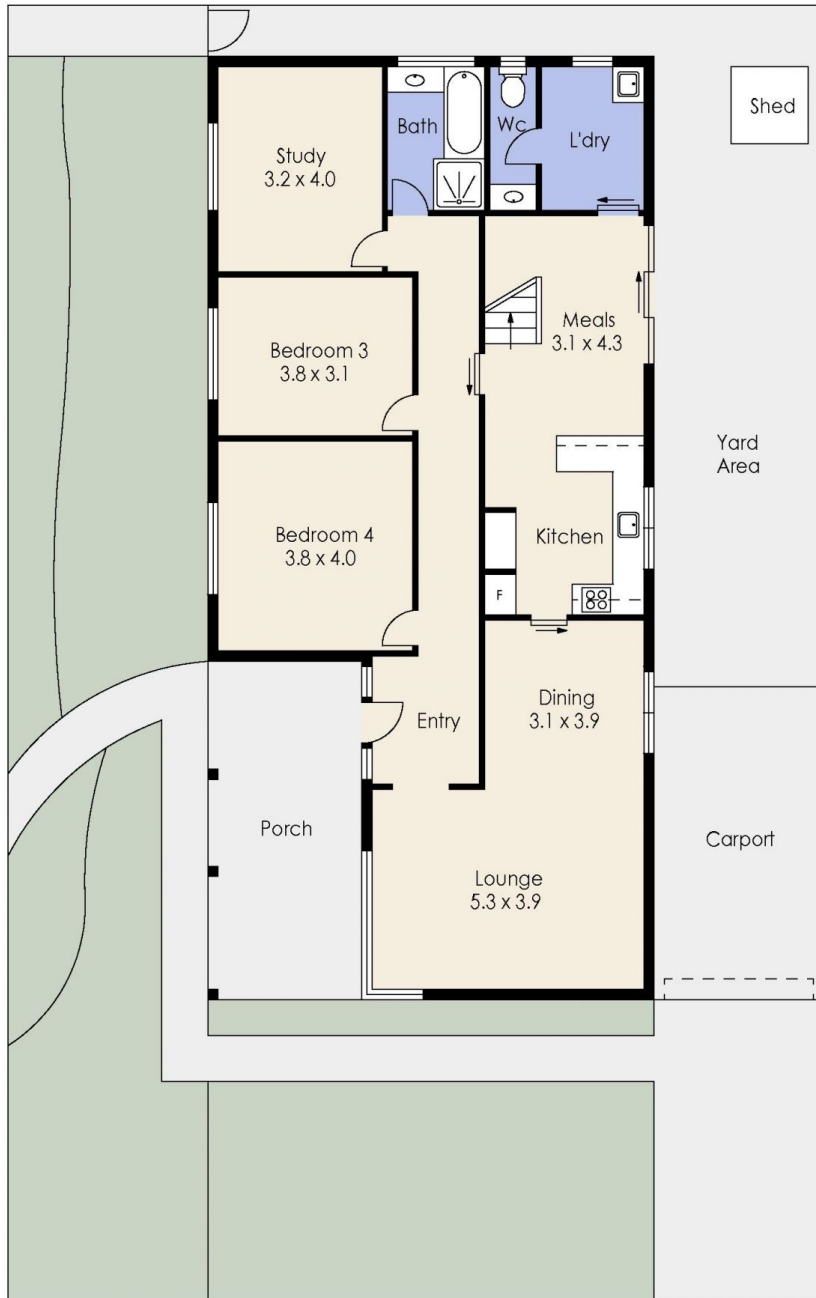
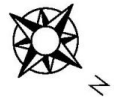
### Property Highlights:

- ? Four spacious bedrooms, with the master featuring a walk-in robe, en suite and private upstairs living/ retreat.
- ? All other bedrooms equipped with double built-in robes
- ? Formal family lounge area upon entry
- ? Open-plan kitchen and meals area filled with natural light, boasting plenty of bench and cupboard space
- ? Central main bathroom with two-way access
- ? Separate toilet and an oversized laundry room
- ? Additional living/rumpus room upstairs, accompanied by a sleek and sophisticated kitchenette ideal as a parents get away

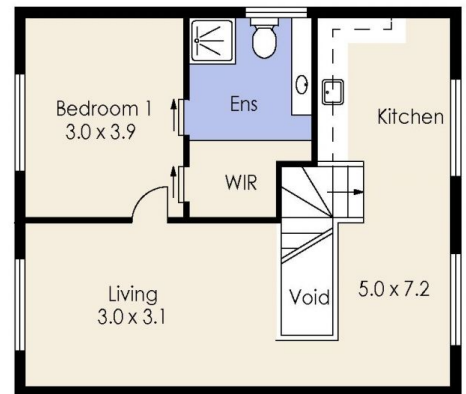


**Ali Dowling**  
**0450 778 972**

# 175 Greaves Street North, WERRIBEE



Ground Floor



First Floor

Whilst every attempt has been made to ensure the accuracy of the floor plan contained here, measurements of doors, windows, rooms and any other items are approximate and no responsibility is taken for any error, omission, or mis-statement. This plan is for illustrative purposes only and should be used as such by any prospective purchaser. The services, systems and appliances shown have not been tested and no guarantee as to their operability or efficiency can be given.