

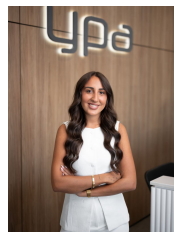


2 Gilmore Place Gladstone Park VIC

4 🛏 2 🚿 1 🚗

- 4 bedrooms
- Large master bedroom with WIR and ensuite
- 3 bedroom all with BIR's
- Main bathroom and guest powder room
- Open plan dining and living area
- Separate upstairs lounge
- Split system heating and cooling
- Outside entertainment area with decking
- Remote control garage with internal entry
- Within close proximity of Gladstone Park Primary and Secondary Schools, Airport West Shopping Centre and much more!!

View : <https://www.ypa.com.au/7842509>



Alexandra Bugeja
0499 974 273

ID REQUIRED AT ALL OPEN FOR INSPECTIONS!