

## 10 Lamington Walk Wollert VIC

3  2  2 

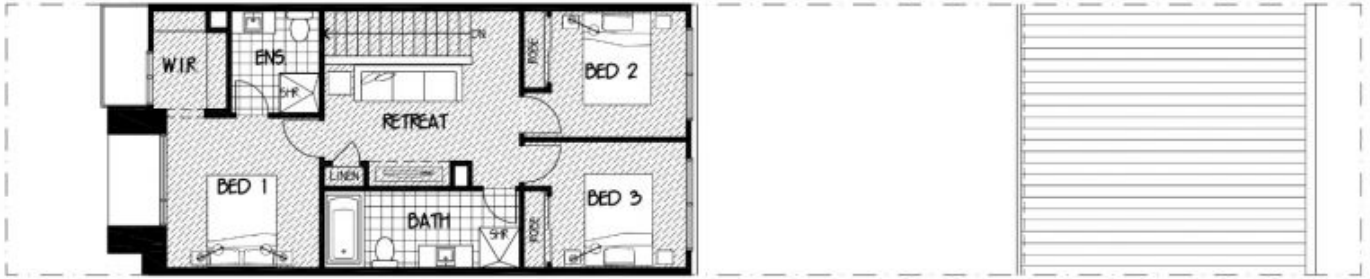
Situated in the most sought after "Rathdowne Estate" is the perfect balance of space, style and convenience sure to impress all! This radiant three bedroom, with 2 living areas, 2.5 -bathroom home offers low maintenance living with swift access to key lifestyle assets.

**View** : <https://www.ypa.com.au/7844871>

This remarkable residence features a functional floorplan, a sun-soaked open plan living/meals area, kitchen area offering stainless steel appliances overlooking to your low maintenance rear yard.

Adding to this comfortable floorplan are generously sized bedrooms with built in robes, master equipped with walk in robe and oversized ensuite and glowing central bathroom.

- 3 spacious bedrooms.



FIRST FLOOR PLAN

NOTE: PLANT SIZES QUANTITY AND PLACEMENT ARE INDICATIVE ONLY.



GROUND FLOOR PLAN