



7 Natalie Court CAMPBELLFIELD VIC

3 1 4

Supremely placed in the heart of Campbellfield with the glorious trails of Merri Creek a stone's throw away, and in effortless distance to public transport and conveniences, this single level recently renovated home delivers classic, spotless proportions.

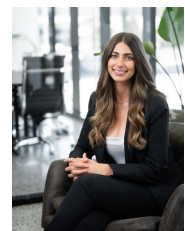
Matched to a young couple or family starting out, the newly rendered brick veneer home welcomes you to appreciate your quiet, convenient court setting. Inviting you inside to the light saturated proportions, the hallway and living domain are characterised with polished hard wood floors throughout. The fully renovated kitchen/meals with only the highest quality finishes. With ample cabinetry, it is immaculately appointed with quality appliances.

Displaying three bedrooms serviced by a beautifully renovated bathroom with floor to ceiling tiles, freestanding

Price : \$ 637,000
Land Size : 586 sqm
View : <https://www.ypa.com.au/7847951>



Ali Faour
0432 273 353



Melissa Abela
0405 264 150