



27 Smeaton Avenue Hoppers Crossing VIC

3 2 2

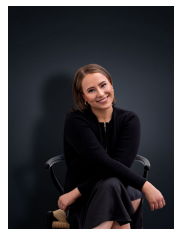
Perfectly located in the central and popular Mossfiel estate this home presents easy access to all amenities right from your doorstep! Close by to Primary & Secondary schools (within walking distance to St Peters Primary school), Kindergartens, Sporting clubs, community gyms, local shops, public transport, and less than a 5 minute drive to Pacific Werribee!

Property features include:

- ? Three bedrooms with built in robes
- ? Master with ensuite (newly renovated shower)
- ? Open plan kitchen, meals and living area
- ? Second living area with external access to the rear
- ? Central main bathroom with separate laundry

Extra features: dishwasher, gas stove top cooking, split system, hardwood polished timber floors throughout, rear

View : <https://www.ypa.com.au/7853073>



Ali Dowling
0450 778 972