



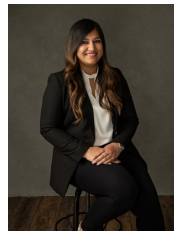
31 Ling Drive Rowville VIC

4  3  1 

This four-bedroom family home offers 3 bathrooms and is situated in a tranquil neighbourhood, offering a perfect balance between suburban serenity and urban convenience.

View : <https://www.ypa.com.au/7858037>

As you approach the property, you'll be immediately struck by its charming curb appeal. The manicured front gardens set the tone for the inviting atmosphere that awaits within. Step through the front door and discover a thoughtfully designed interior with an abundance of natural light that enhances the abundance of spacious living areas.



Nidhi Mahajan
0416 013 196

The heart of this home is the open-plan kitchen, dining, and living space. The kitchen is a chef's dream, featuring high-end stainless steel appliances, ample counter space, and sleek cabinetry. Whether you're hosting family dinners or entertaining friends, this versatile space effortlessly caters to your lifestyle.

The master bedroom is a true retreat, offering a spacious sanctuary complete with a private ensuite bathroom and a walk-in robe. The additional three bedrooms are generously sized, perfect for accommodating a growing family or providing flexibility for a home office or guest rooms.

Entertaining is a breeze in the backyard oasis, where a