

## 14 Laysan Crescent Werribee VIC

4 2 2

Situated within the booming Harpley Estate of Werribee with so much on offer including a new Primary School, Kindergarten, medical facilities and soon to come cafes, restaurants and retail outlets to offer ample shopping opportunities! This fantastic family home with all the bells and whistles offers the next lucky owners a wonderfully thought-out floor plan, perfect for a large growing family. With impeccable presentation throughout and offering the following.

- ? Four great size bedrooms all with robes
- ? Expansive master bedroom with walk in robe and ensuite
- ? Central bathroom and separate toilet
- ? Study room upon entry overlooking beautiful walking tracks
- ? Large kitchen with waterfall stone benchtops, 900mm oven and cooktop with a generous sized pantry
- ? Modern living open plan kitchen, meals and family living

**Price** : \$ 735,000  
**Land Size** : 400 sqm  
**View** : <https://www.ypa.com.au/7867204>

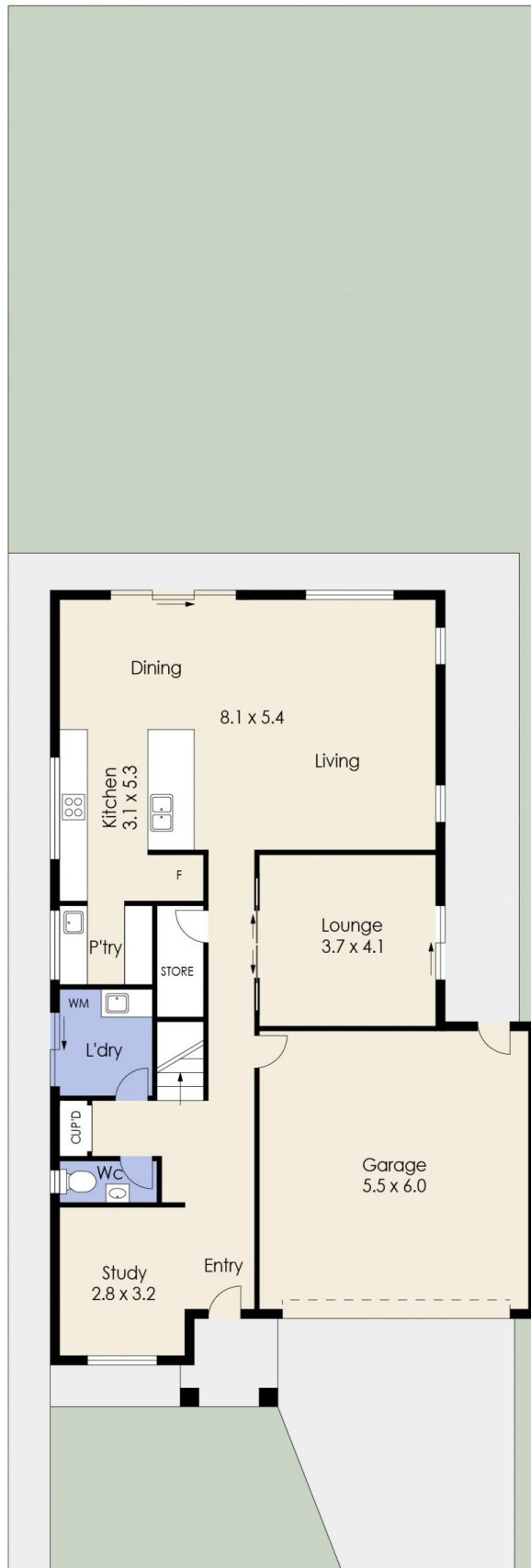


**Mitch Smit**  
**0450 913 513**



**James Christou**  
**0450 733 302**

# 14 Laysan Crescent, WYNDHAM VALE



Ground Floor



First Floor

Whilst every attempt has been made to ensure the accuracy of the floor plan contained here, measurements of doors, windows, rooms and any other items are approximate and no responsibility is taken for any error, omission, or mis-statement. This plan is for illustrative purposes only and should be used as such by any prospective purchaser. The services, systems and appliances shown have not been tested and no guarantee as to their operability or efficiency can be given.