



116 Edwardson Drive Coomera QLD

3 2 2

Exceptional Comfort and Style

Welcome to 116 Edwardson Drive, Coomera - a charming residence that encapsulates comfort and style. This 3-bedroom, 2-bathroom home features a double-car garage and a spacious driveway, securely accommodating two more cars off the street for your convenience and peace of mind.

The master bedroom boasts a touch of luxury with walk-in robes and an ensuite featuring double vanities. The remaining bedrooms are serviced by a central bathroom, offering practicality and ease of living. The games area or formal dining can easily be converted to open study or bedroom if you add a wall.

Sitting on a generous 548 m2 of land, the property provides

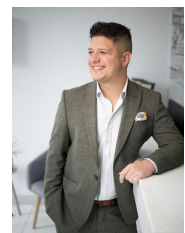
Building Size : 227.7 sqm

Land Size : 548 sqm

View : <https://www.ypa.com.au/7874819>



Steven Spiteri
0423 428 079



Daniel Garcia
0416 565 417



FLOOR PLAN

116 Edwardson Drive, Coomera