

## 20E Tableland Road Tarneit VIC

3 2 1

A brilliant entry into the suburb of Tarneit, this cosy property is a winning choice either way with its affordability and superb location impressing any first home buyer or investor. You will be spoilt for choice with the location being so close to gorgeous park lands, quality primary and secondary schools, local shops and public transport.

### Features Include:

- ? Master bedroom showcases a built-in wardrobe and ensuite
- ? An additional two spacious bedrooms with a built-in wardrobe
- ? The kitchen is located perfectly to incorporate the meals and family area
- ? Kitchen complete with ample cupboard space, walk-in pantry, caeser stone bench top, stainless steel appliances including 900mm freestanding oven with gas cook top,

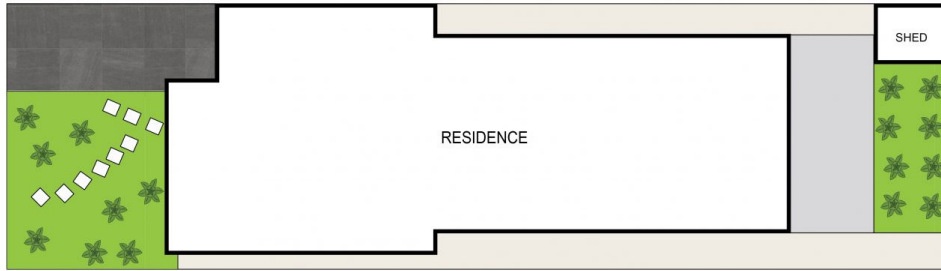
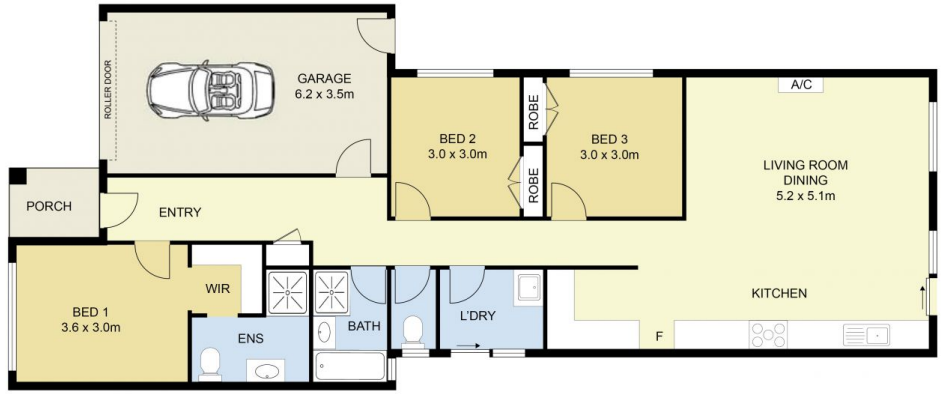
**Price** : \$ 472,000  
**Land Size** : 272 sqm  
**View** : <https://www.ypa.com.au/7878449>



**Andrew Migliorisi**  
0432 526 844



**Stephen Azzopardi**  
0402 012 554



SITE PLAN  
(NOT TO SCALE)

## 20E Tableland Road, Tarneit



DISCLAIMER : ALL DIMENSIONS ARE AN APPROXIMATION ONLY AND NO GUARANTEE IS GIVEN WITH RESPECT TO ACCURACY.