



20 Boboli Avenue Clyde North VIC

4  2  2 

This brand new exquisite home is a true masterpiece, boasting a range of exceptional features that will captivate all buyers. Situated in a sought-after location in Clyde North, this property offers convenience, luxury, and an enviable lifestyle. Neutral tones, natural materials, and bold features make this Glenville home truly exceptional. This character-packed home boasts 4 bedrooms, 2 bathrooms, and a double garage that accommodates over 400 m2 in the quiet suburb of Clyde North.

Upon entering, you will be immediately impressed by the attention to detail and the high-quality finishes throughout. The master bedroom, complete with a walk-in robe and ensuite, provides a private sanctuary for relaxation and rejuvenation. With three additional well-appointed bedrooms and a stylish family bathroom, this home accommodates families of all sizes with ease.

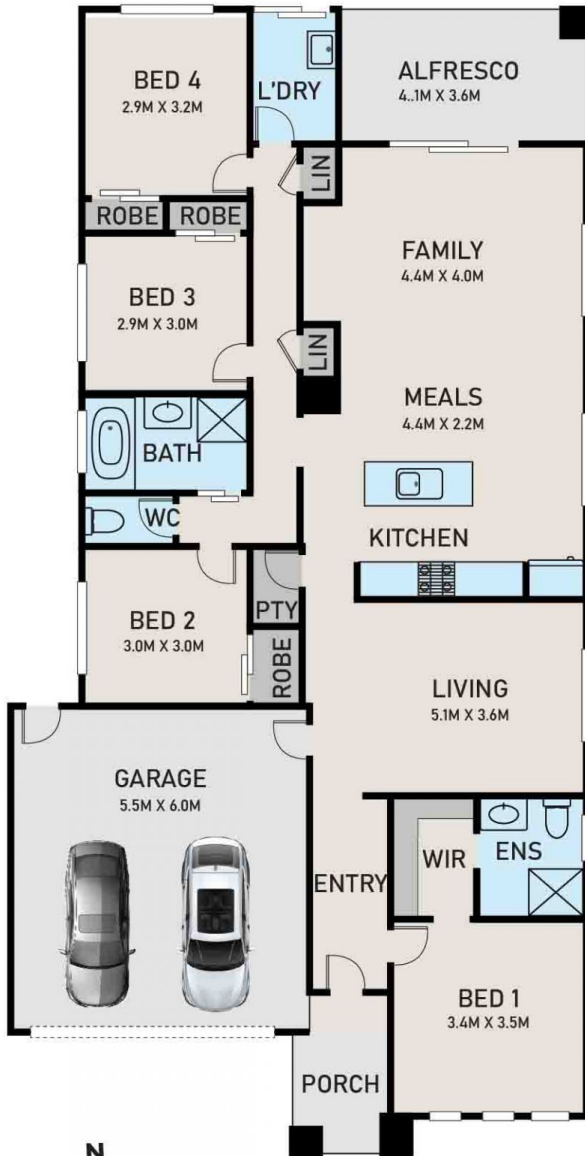
Land Size : 400 sqm

View : <https://www.ypa.com.au/7879787>

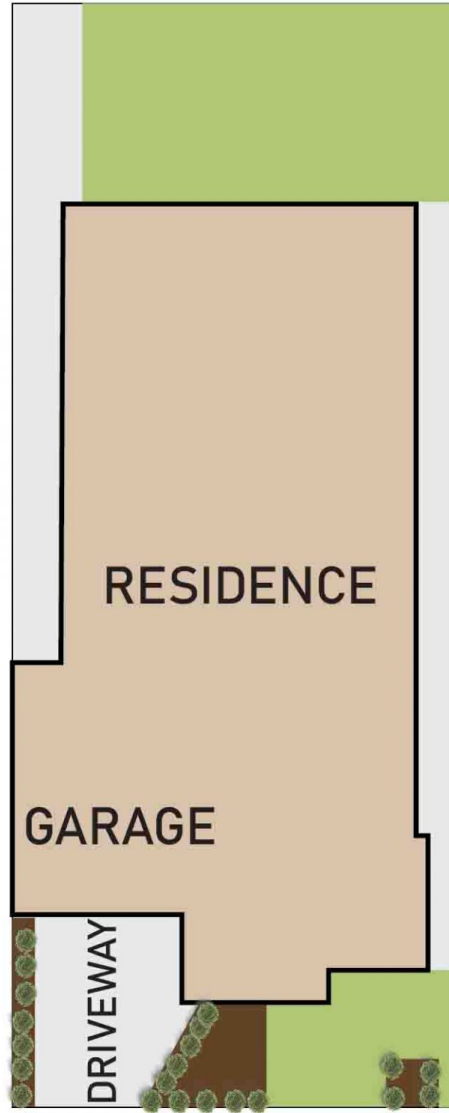


Jayne Rosevear
0438 580 780

FLOOR PLAN



SITE PLAN



20 BOBOLI CCT, CLYDE NORTH

* DIMENSIONS ARE APPROXIMATE AND FOR ILLUSTRATIVE PURPOSES ONLY

ypa