

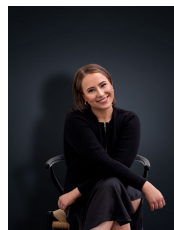
## 18 Burke Street Werribee VIC

4  2  2 

Discover the charm and convenience of this beautifully presented home, nestled in one of Werribee's most desirable locations. This property is not just a house; it's a gateway to a lifestyle of ease and community, located just a short walk from the bustling Werribee CBD - With its array of cafes, restaurants, shops, and the Werribee Train Station. Plus, it's zoned for some of Werribee's most reputable schools including Corpus Christi & Werribee Primary School, Werribee Secondary, and MacKillop College. Spread over approximately 539m<sup>2</sup>, this home is sure to meet all your family's needs.

**Land Size** : 539 sqm

**View** : <https://www.ypa.com.au/7888748>



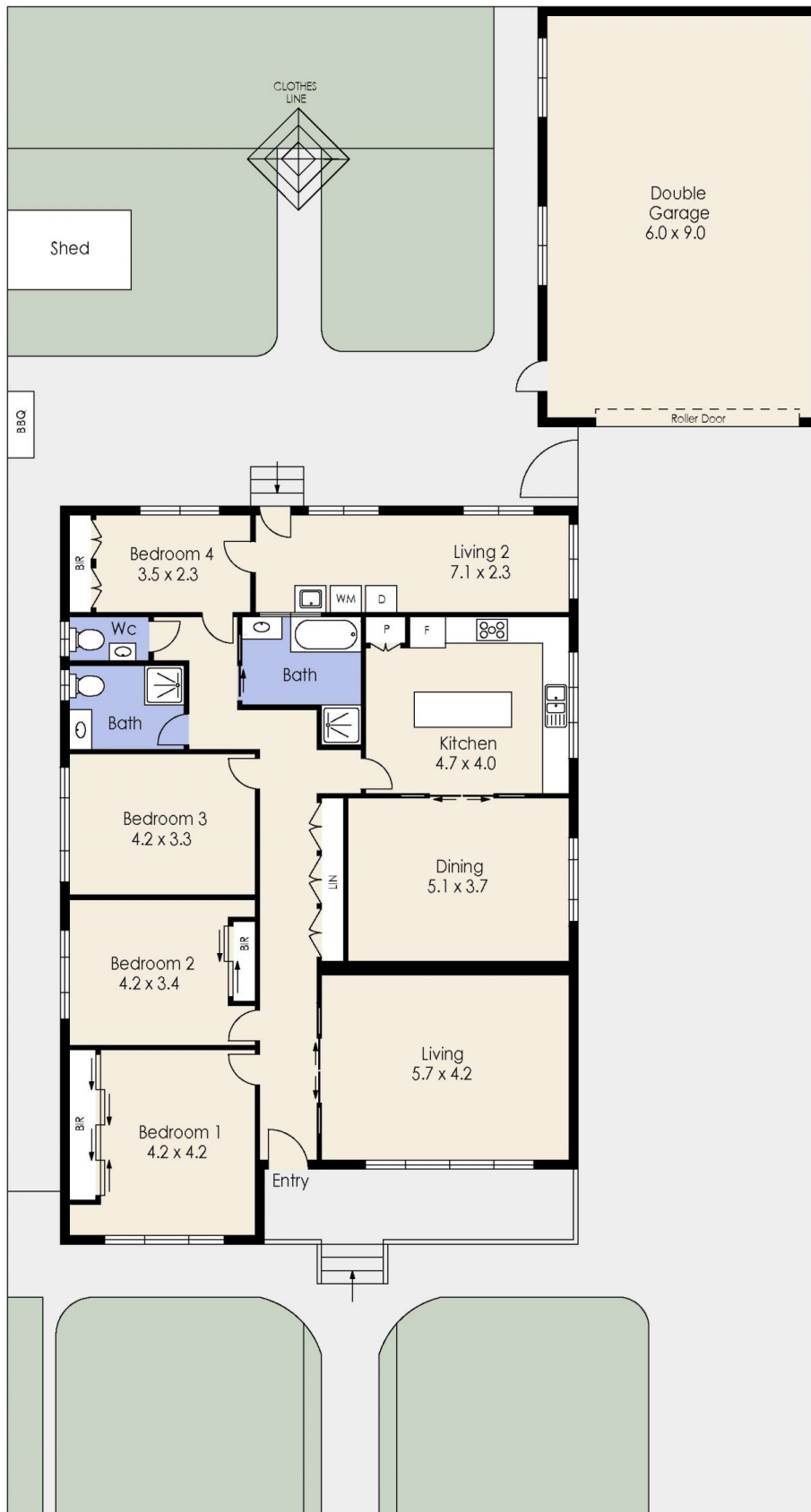
**Ali Dowling**  
0450 778 972

### Home Features That Exude Comfort & Style:

? Classic Elegance: High ceilings, decorative corning, and ceiling roses retain the home's charming character.

? Spacious Accommodations: Four generously sized

# 18 Burke Street, WERRIBEE



Whilst every attempt has been made to ensure the accuracy of the floor plan contained here, measurements of doors, windows, rooms and any other items are approximate and no responsibility is taken for any error, omission, or mis-statement. This plan is for illustrative purposes only and should be used as such by any prospective purchaser. The services, systems and appliances shown have not been tested and no guarantee as to their operability or efficiency can be given.