



## 12 Coppelius Close Sunbury VIC

4 2 4

Nestled on a peaceful, tree-lined street on an impressive block size of approximately 1026m<sup>2</sup>, this extraordinary residence offers the perfect haven for a growing family or those seeking a spacious lifestyle! Located within walking distance to the prestigious Spavin Lake Reserve and its scenic parklands, this home is a true gem. As you step through the front door, you'll be greeted by an expansive living area, setting the tone for warmth and comfort. The spacious kitchen, complete with a 900mm gas cooktop, oven, dishwasher and ample bench space. Adjoining the kitchen, a generous dining area opens up to a second large living space, providing versatility for your family's needs.

The master bedroom with a walk-in robe and an ensuite. Three additional bedrooms, each with built-in robes, a main bathroom with a separate toilet. Additional features include ducted heating, evaporative cooling, ducted vacuum, 3

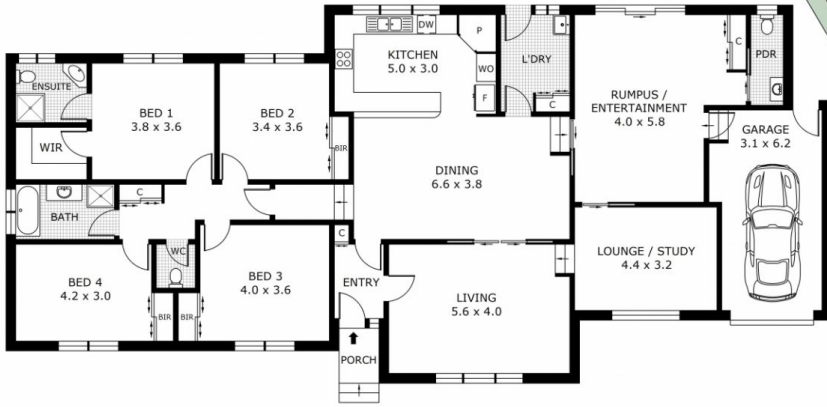
**Price** : \$ 815,000  
**Land Size** : 1026 sqm  
**View** : <https://www.ypa.com.au/7902388>



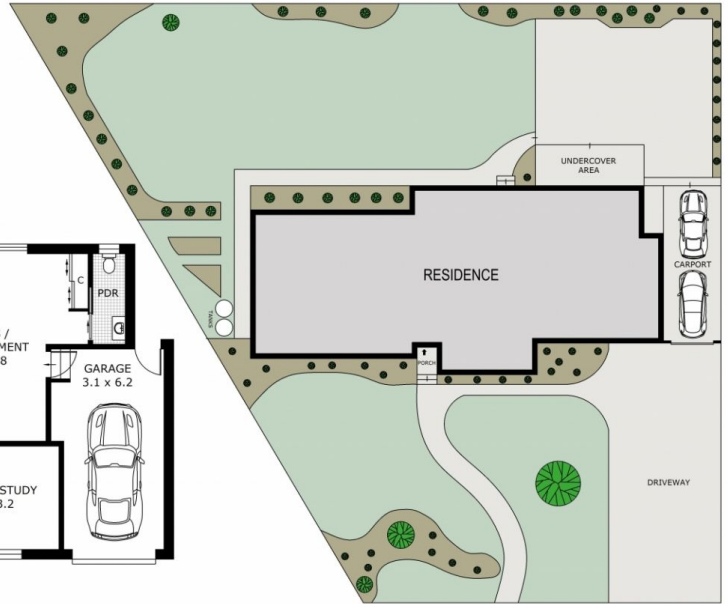
**Patrick Kilkeny**  
**0401 175 248**



**Cassandra Doria**  
**0497 972 028**



GROUND FLOOR



SITE PLAN



Disclaimer: All images, views and diagrams are indicative only. Dimensions, areas and landscape are indicative and subject to change without notice. Purchasers should check the plans and specifications included in the terms of the contract of sale carefully prior to signing the contract.