



93 Stonehill Drive Maddingley VIC

4  2  2 

Step into the realm of contemporary luxury with this exceptional property located in the esteemed Essence District of Stonehill Estate. Situated on an impressive 755m² block, this modern masterpiece offers an unparalleled blend of space, style, and sophistication. Boasting four generously sized bedrooms, each adorned with built-in robes, and a lavish master suite featuring a full walk-in robe and deluxe ensuite, this home provides the epitome of modern living.

Entertaining is a delight in the open-plan kitchen and family/meals area, where sleek finishes and high-end appliances, including a 900mm induction cooktop and in-built oven, set the stage for culinary adventures. Additional upgrades such as a striking feature front façade, an exclusive electrical package, heating and cooling systems, and upgraded window furnishings enhance the home's allure.

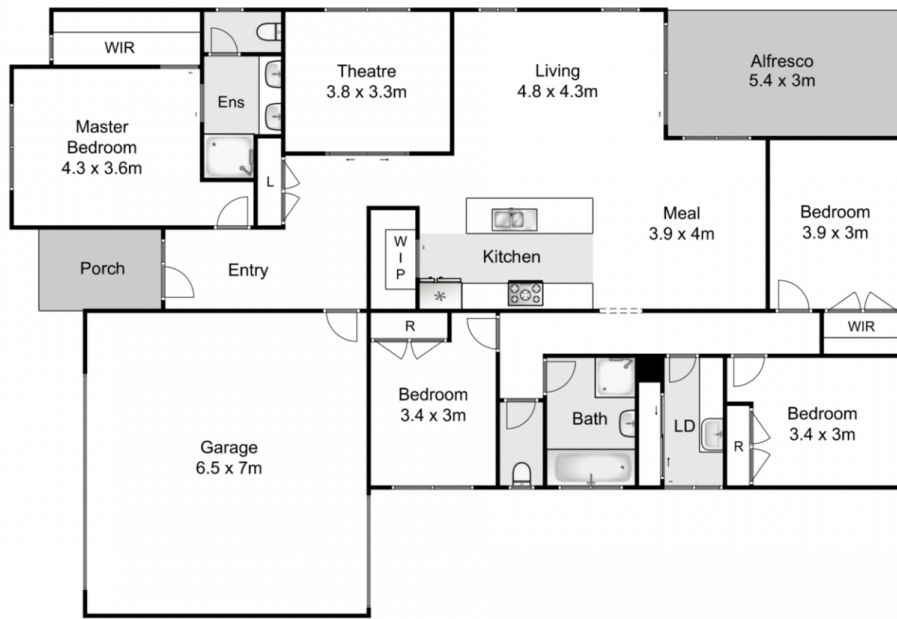
Price : \$ 745,000

Land Size : 755 sqm

View : <https://www.ypa.com.au/7912903>



Shane O'Brien
0431 766 082



93 Stonehill Drive, Maddingley

YPA

Whilst every attempt has been made to ensure the accuracy of the floor plan contained here, measurements of doors, windows, rooms and any other items are approximate and no responsibility is taken for any error, omission, or mis-statement. This plan is for illustrative purposes only and should be used as such by any prospective purchaser. The services, systems and appliances shown have not been tested and no guarantee as to their operability or efficiency can be given.

