



## 17 Lores Drive BROOKFIELD VIC

4 2 2

This exceptional family residence, nestled on a spacious (504m<sup>2</sup>) approx. parcel of land, boasts proximity to essential amenities. Situated near parks, Shopping Centres, Melton South Village, Melton South Train Station, and various schools, this property puts convenience right at your doorstep.

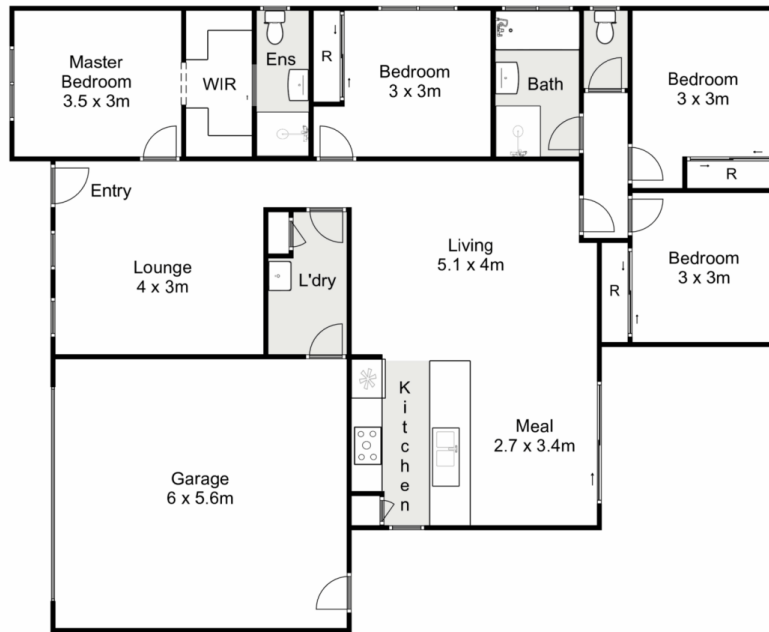
Upon entry, you'll be welcomed into the expansive formal lounge, offering ample space for family gatherings. The generously sized master bedroom, positioned at the front of the home, provides optimal comfort with a sizable walk-in robe and well-appointed ensuite. The remaining three bedrooms feature built-in robes and are serviced by a modern central bathroom.

The heart of the home unveils a stunning kitchen, equipped with an abundance of bench and cupboard space, a

**Land Size** : 504 sqm  
**View** : <https://www.ypa.com.au/7917274>



**Kate McGlone**  
0401 853 244



## 17 Lores Drive, Brookfield

Ypa

Whilst every attempt has been made to ensure the accuracy of the floor plan contained here, measurements of doors, windows, rooms and any other items are approximate and no responsibility is taken for any error, omission, or mis-statement. This plan is for illustrative purposes only and should be used as such by any prospective purchaser. The services, systems and appliances shown have not been tested and no guarantee as to their operability or efficiency can be given.

