



## 23 Davies Street Safety Beach VIC

2 1 2

Consider the potential of this 2-bedroom holiday home in Safety Beach, in a sought after location on the Mornington Peninsula. Nestled on a spacious 810m<sup>2</sup> lot, this 1970s original home offers great opportunity.

The location, conveniently within walking distance to the Sandy foreshore and Martha Cove Marina, adds to the appeal of this property.

Immerse yourself in the relaxed seaside atmosphere of Safety Beach, with amenities like cafes, bars, and restaurants just a short distance away. Discover the potential for a comfortable residential haven in this sought-after area.

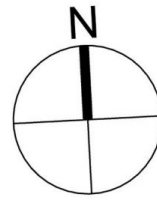
**Land Size** : 827 sqm  
**View** : <https://www.ypa.com.au/7929156>



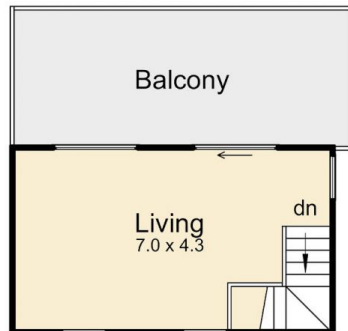
**Nancy Crupi**  
0413 969 284



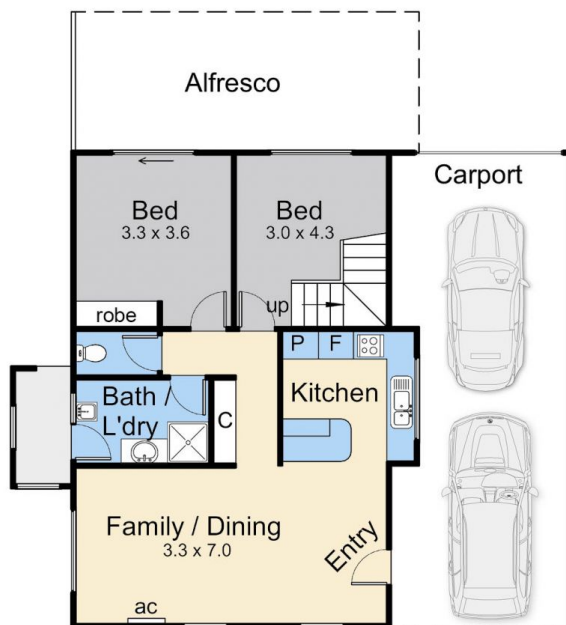
**Kate Visser**  
0406 796 580



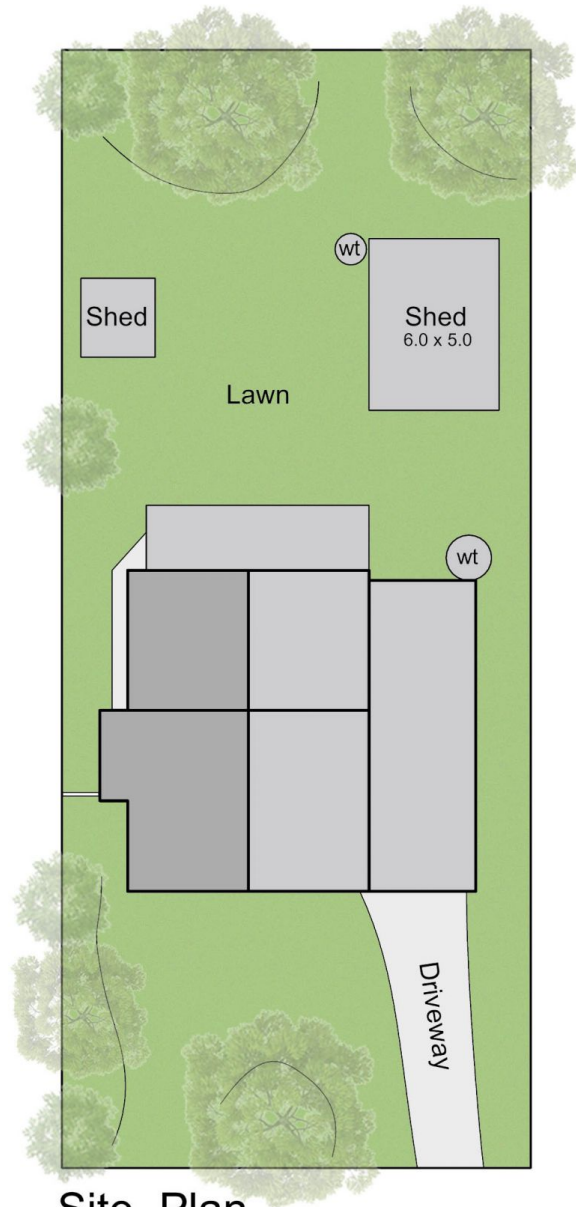
Living Area = 10.9 squares (approx)



Upper Floor



Lower Floor



Site Plan

## 23 Davies Street, Safety Beach

This floorplan is for illustration purposes only and no warranty is given to its accuracy. Purchasers are advised to carry out their own investigations. Produced by **realitywriters** (03) 5970 2222