



1/28-30 Childers Street Cranbourne VIC

3  **1**  **2** 

This stunning 3-bedroom unit is located at 1/28-30 Childers Street, Cranbourne designed for those seeking the perfect blend of comfort and functionality, this property is perfect for families, couples, investors or downsizers.

Price : \$ 565,000

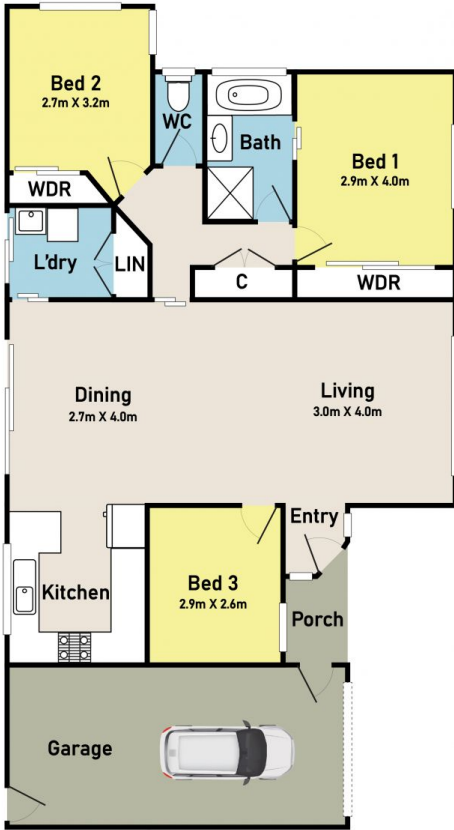
View : <https://www.ypa.com.au/7931821>

Situated in a sought-after neighborhood, conveniently close to all amenities. Easy access to Cranbourne Park Shopping Centre, restaurants, parks, schools and so much more.

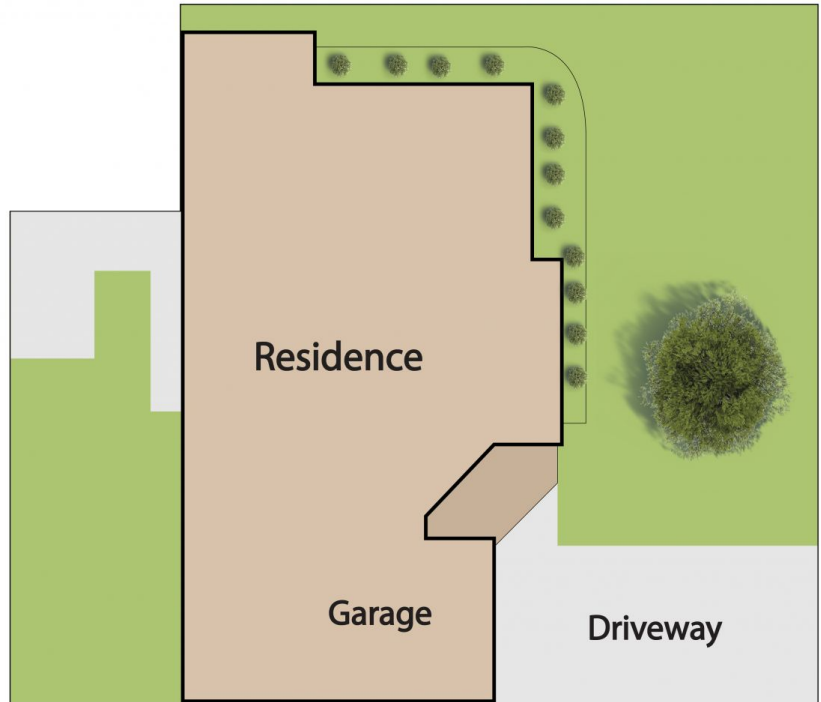
As you step inside, you will be greeted by a spacious and light-filled living area. The open-plan design seamlessly connects the living, dining, and kitchen areas, providing a great space for entertaining guests or spending quality time with family.

The kitchen is equipped with modern appliances, including a dishwasher, making meal preparation a breeze. The

Floor Plan



Site Plan



1/28-30 Childers Street, Cranbourne



* Dimensions are approximate and for illustrative purposes only