



21 Showbridge Way Werribee VIC

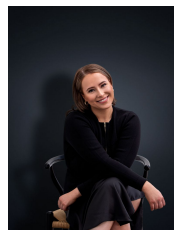
4 2 2

Discover modern living wrapped in comfort at this stunning 4-bedroom, 2-bathroom home, complete with a spacious 2-car garage. This residence marries contemporary design with the warmth and comfort of a home barely touched by time.

Land Size : 344 sqm
View : <https://www.ypa.com.au/7949578>

Why Make This Your Home:

- ? Modern Sanctuary: The spacious master bedroom is a peaceful retreat, boasting stylish finishes and ample space.
- ? Elegant Living: An open-plan living area merges elegance with functionality, ideal for both relaxing and hosting.
- ? New Home Assurance: Enjoy the peace of mind with 6.5 years of building warranty remaining, ensuring your comfort and security.
- ? Future-Ready: Located a stone's throw from the new



Ali Dowling
0450 778 972

