



32 Grenville Drive Garibaldi VIC

4 2 4

Introducing an exquisite, custom-built home positioned on approximately 6.7 acres of stunning countryside, meticulously divided into three paddocks. Just a short 11km drive from Buninyong, this property offers a peaceful lifestyle in a highly sought-after location.

Constructed in December 2014, the residence boasts a sprawling orchard, meticulously maintained and irrigated by a tank and sprinkler system connected to a sizable dam. The property features a 13-meter poly tunnel, vegetable/berry beds watered by 25,000 litres of tank water, additional sheds including an aviary and woodshed. The chook house, complete with a solar-automated door, opens into the fully enclosed orchard.

Upon entry, the home welcomes you with an open second living area and a nearby study/fourth bedroom. The living zone impresses with high ceilings that enhance the open plan design and floods the interior with natural light through

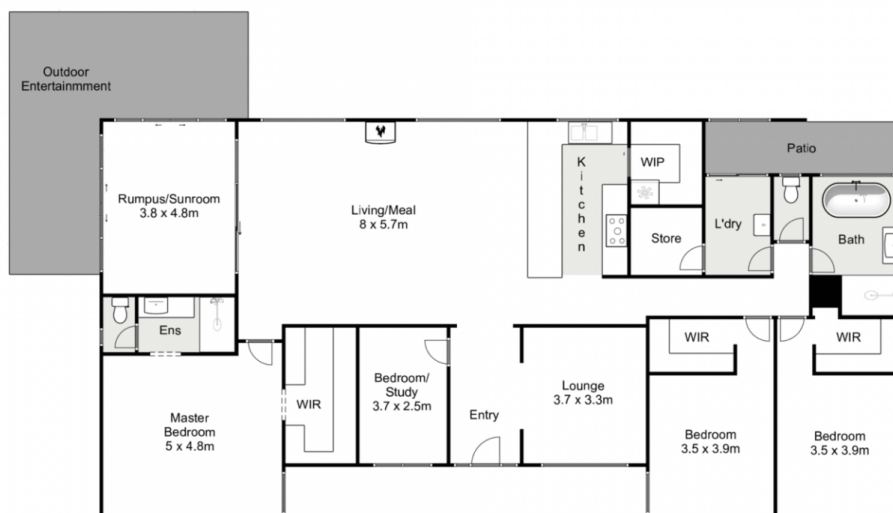
Price : \$1,050,000 - \$1,150,000
Land Size : 2.71 ha
View : <https://www.ypa.com.au/7967587>



Shane O'Brien
0431 766 082



Shandelle Cooper
0478 355 688



32 Grenville Drive, Garibaldi

ypa

Whilst every attempt has been made to ensure the accuracy of the floor plan contained here, measurements of doors, windows, rooms and any other items are approximate and no responsibility is taken for any error, omission, or mis-statement. This plan is for illustrative purposes only and should be used as such by any prospective purchaser. The services, systems and appliances shown have not been tested and no guarantee as to their operability or efficiency can be given.

