



3/15 Jellicoe Street Werribee VIC

3 2 1

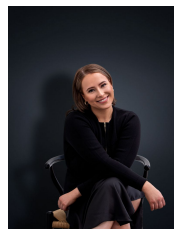
Located in a popular area of Werribee sits this immaculate property.

View : <https://www.ypa.com.au/7973472>

Featuring 3 spacious bedrooms - main with ensuite, living/kitchen/meals with quality appliances, central bathroom, laundry, decked entertaining area & low maintenance gardens.

Extra features include: ducted heating, x2 split system cooling units & single remote garage with internal access.

Located within walking distance to Werribee Train Station, public transport, Watton street shops and local amenities



Ali Dowling
0450 778 972