



30 Wolviston Avenue Hillside VIC

3 2 2

Located in the heart of Hillside, this beautiful family home offers the perfect blend of modern comfort and cozy warmth, and is waiting for you and your family to call home and create memories of a lifetime! All set on a approx. block measuring 688m² it's home not to miss out on. Offering three generous sized fitted bedrooms, master with walk in robe and renovated ensuite, family living area upon entry adjacent to open study / or bonus 4th bedroom, flowing into a modernized kitchen finished with stainless steel appliances and an ample amount of bench and cupboard space overlooking meals and family area. Step outdoors, to a massive outdoor entertainment area highlighted with outdoor heaters fantastic for entertaining all year round, featuring an in-ground solar heated salt pool. Other features include; double remote garage, potential side access ideal for boats/caravan or trailer, in-built BBQ area, gas ducted heating, evaporative cooling,

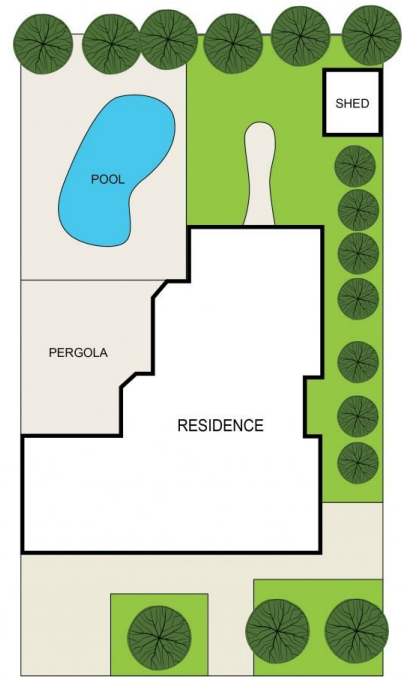
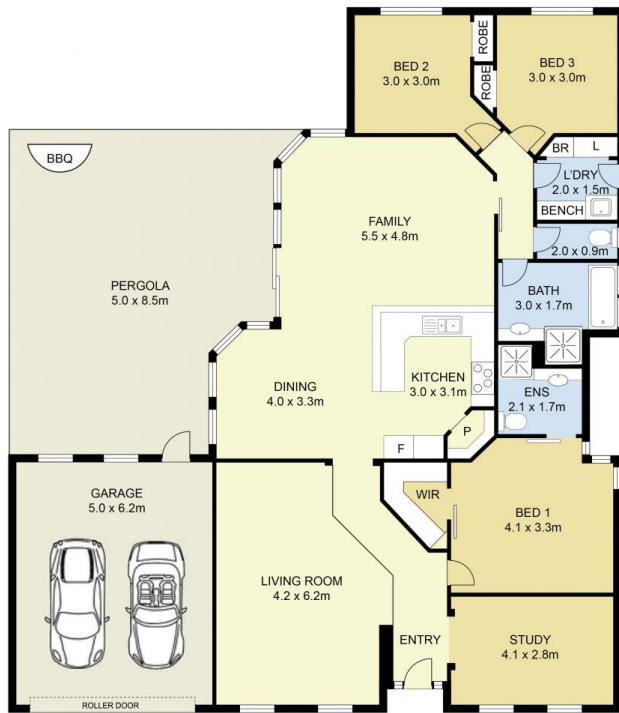
Land Size : 688 sqm
View : <https://www.ypa.com.au/7993291>



Monique Cukavac
 0449 624 617



Kayla Ridolfi
 0421 866 494



SITE PLAN
(NOT TO SCALE)



30 Wolviston Ave Hillside

DISCLAIMER : ALL DIMENSIONS ARE AN APPROXIMATION ONLY AND NO GUARANTEE IS GIVEN WITH RESPECT TO ACCURACY.