



5 Liquidamber Drive Romsey VIC

4  2  2 

Welcome to 5 Liquidamber Drive Romsey !

Nestled in the sought-after Autumn Views Estate on a massive corner lot of approx. 989m² this Orbit home less than 3 years old offers superb living with an outstanding floorplan, a luxury fit out and perfect private outdoor spaces for entertaining or a bit of kick to kick football with the family.

On entry you will be nothing but impressed with the home feeling both inviting and welcoming as you walk through the wide entry foyer to the generous open plan and light filled family and dining area. The chef like kitchen has the perfect size island bench, stainless steel appliances, plenty of storage as well as a butler's pantry and both the living area and the media/rumpus/pool room look out to the alfresco area and fully landscaped yards for that perfect

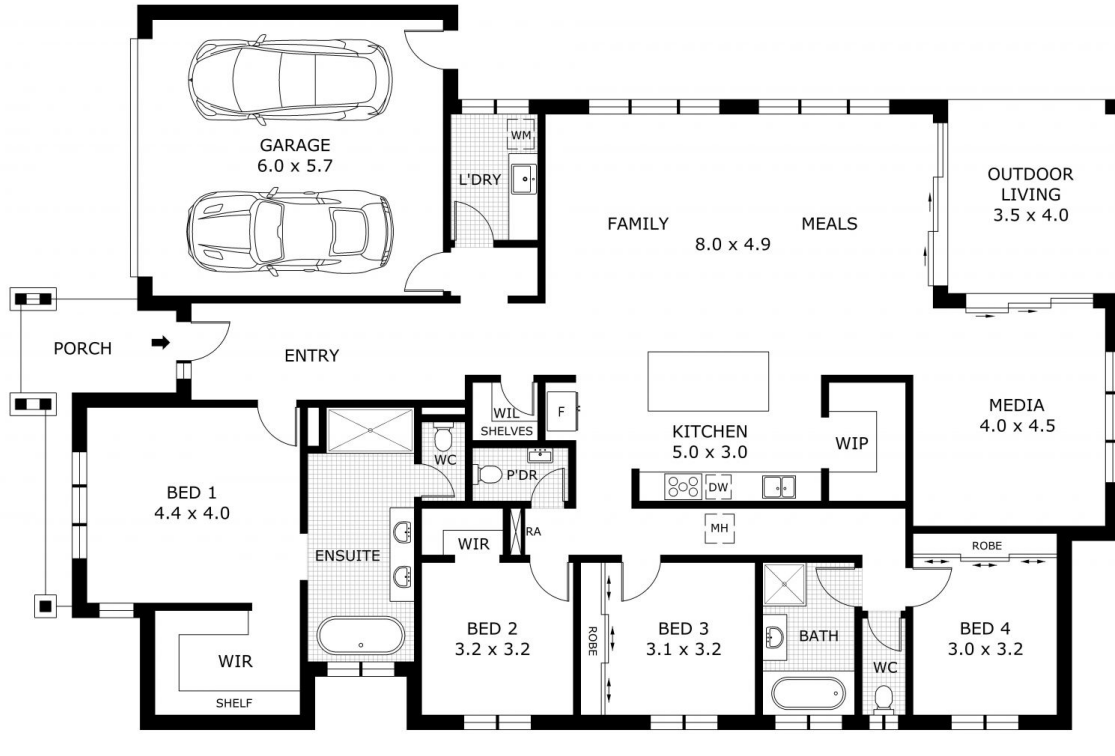
Price : \$ 895,000

Land Size : 989 sqm

View : <https://www.ypa.com.au/7994311>



Nic Owen
0422 107 177



Disclaimer: All images, views and diagrams are indicative only. Dimensions, areas and landscape are indicative and subject to change without notice. Purchasers should check the plans and specifications included in the terms of the contract of sale carefully prior to signing the contract.