

78 Simpson Street Ballan VIC

3  1  1 

In the heart of Ballan, this charming 3-bedroom home combines character with comfort, featuring stunning bluestone that adds warmth and style.

Inside, three spacious bedrooms offer peaceful retreats, while the large central living area seamlessly connects to an open meals and kitchen area. The well-appointed kitchen includes a dishwasher, oven, cooktop, and ample storage space.

Step outside to find a covered alfresco area, ideal for entertaining or relaxing outdoors. A single car carport provides convenient parking, and the beautiful front garden enhances the home's appeal.

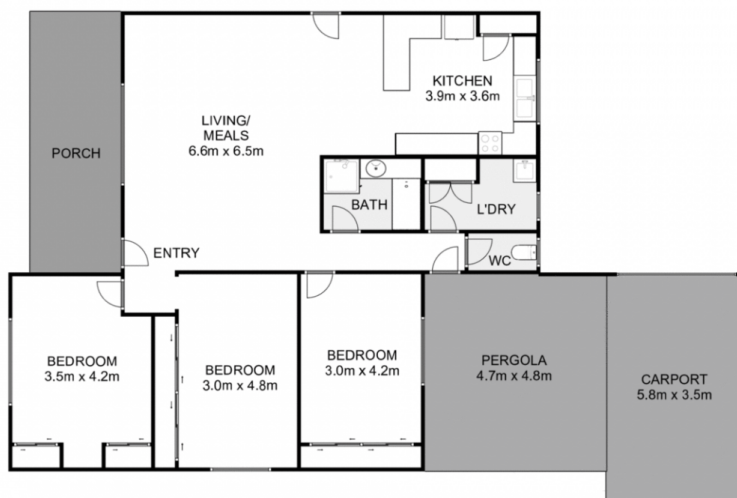
Conveniently located, this home is a short walk from Ballan's main street, offering easy access to shops, cafes, and amenities. Enjoy the rural lifestyle without sacrificing accessibility, with the Western Freeway and Vline Train station just minutes away. Melbourne is approximately 50

Price : \$489,000 - \$520,000

View : <https://www.ypa.com.au/8002032>



Shane O'Brien
0431 766 082



78 Simpson Street, Ballan

YPA

Whilst every attempt has been made to ensure the accuracy of the floor plan contained here, measurements of doors, windows, rooms and any other items are approximate and no responsibility is taken for any error, omission, or mis-statement. This plan is for illustrative purposes only and should be used as such by any prospective purchaser. The services, systems and appliances shown have not been tested and no guarantee as to their operability or efficiency can be given.

