



14 Catamaran Drive Werribee South VIC

4  4  2 

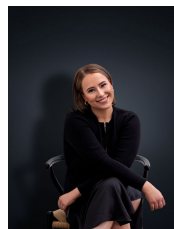
Located in the highly sought after Wyndham Harbour Estate sits this very rare opportunity to lease this beautiful luxury home located approximately 30 minutes from Melbourne CBD.

View : <https://www.ypa.com.au/8005372>

Features include:

- Four very spacious bedrooms all fitted with walk in robes
- Large open plan tiled kitchen with a walk-in pantry and stainless steel appliances
- Indoor entertaining area including kitchenette which leads out onto the huge, covered timber decking
- Four main bathrooms which all include baths, large showers, and twin vanities

Additional features include: separate laundry and powder room, ducted heating, evaporative cooling, ample storage



Ali Dowling
0450 778 972