



10 Bellevue Road Dromana VIC

4  2  2 

Watch the setting sun as it kisses the city skyline and dips into Port Phillip Bay from this high-set Peninsula residence. Built to capture the vivid blues of the bay, this four to five bedroom home will leave you mesmerised.

Price : \$1,395,000 - \$1,495,000
Land Size : 743 sqm
View : <https://www.ypa.com.au/8010356>

Featuring:

? Sprawling over two storeys with a total of four bedrooms PLUS study or 5th bedroom

? Wake up to your very own water views from the master bedroom

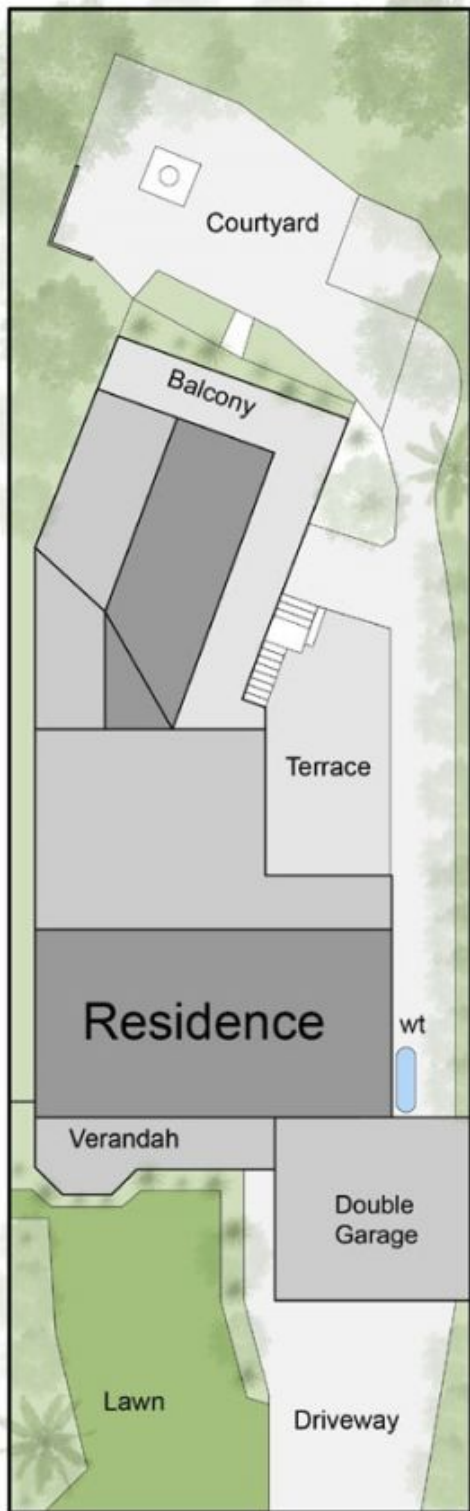
? The master suite boasts expansive proportions and is served by a very spacious ensuite complete with double vanities, a spa bath and separate toilet



Elke Remscheid
0423 211 315



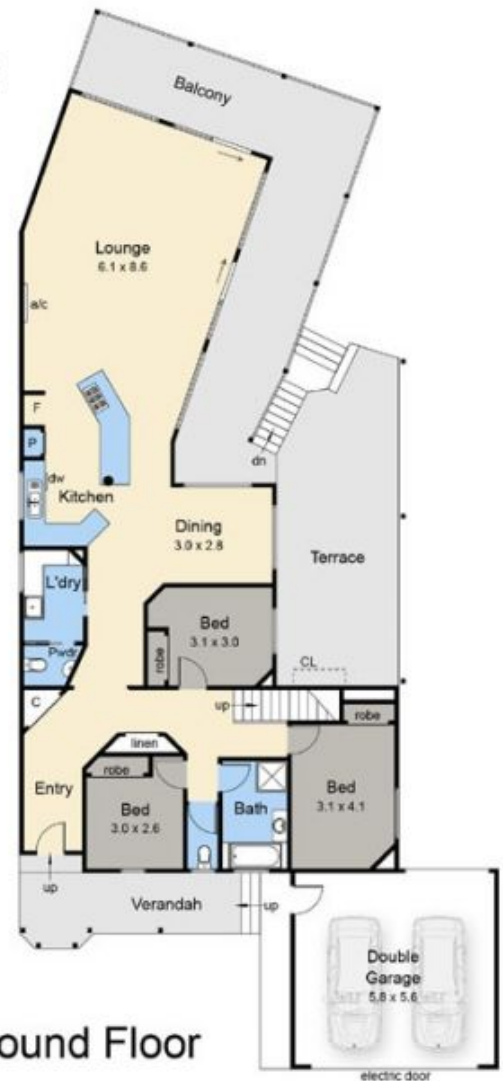
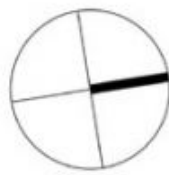
Michael Dimech
0417 399 511



Site Plan



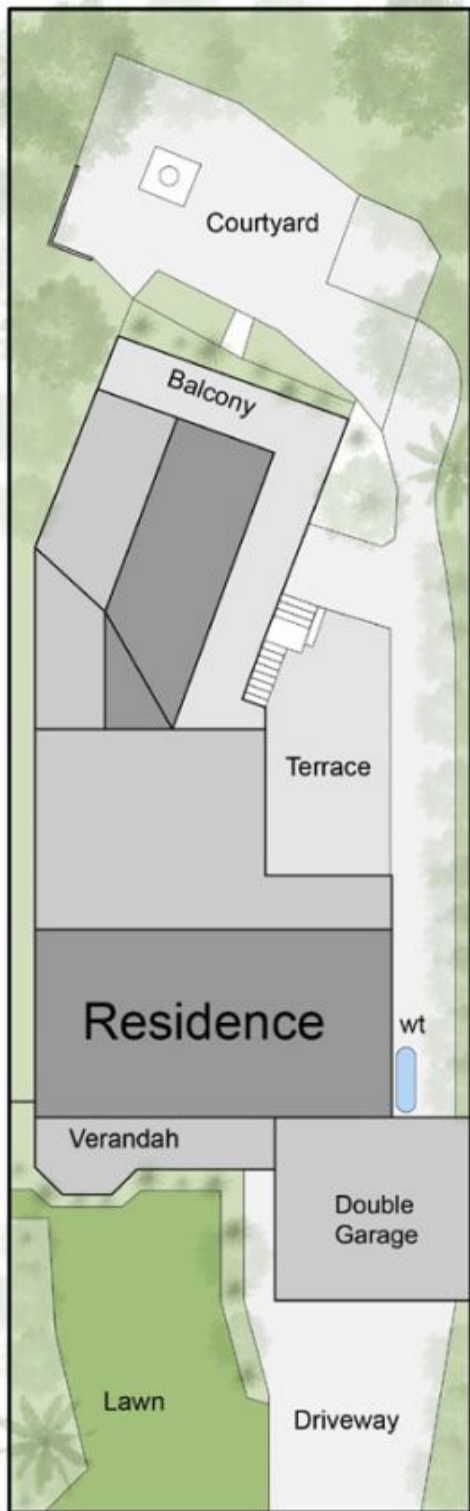
First Floor



Ground Floor

10 Bellevue Road, Dromana

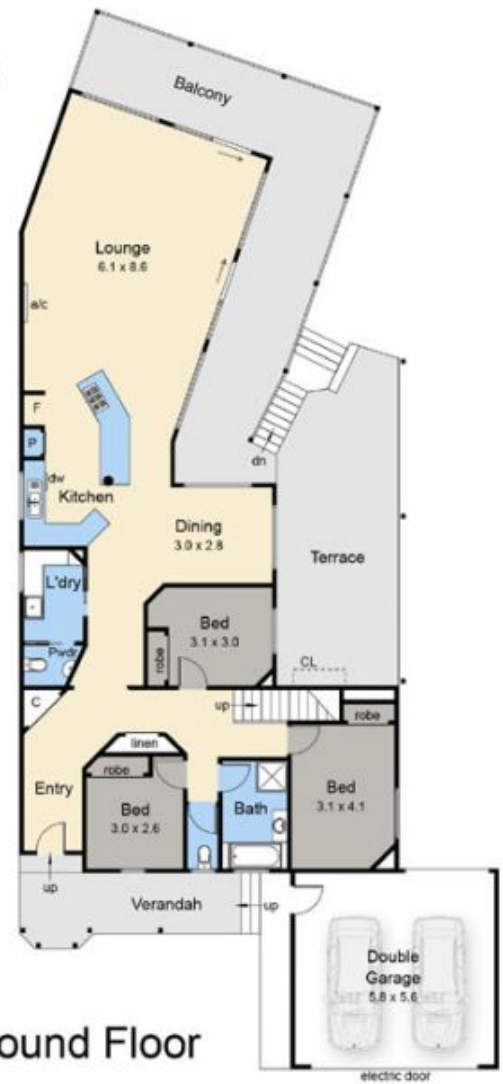
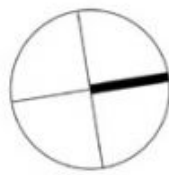
This floorplan is for illustration purposes only and no warranty is given as to its accuracy. Purchasers are advised to carry out their own investigations. Produced by realtywriters (03) 5970 2222



Site Plan



First Floor



Ground Floor

10 Bellevue Road, Dromana

This floorplan is for illustration purposes only and no warranty is given as to its accuracy. Purchasers are advised to carry out their own investigations. Produced by realtywriters (03) 5970 2222