



1/8 Linda Place KURUNJANG VIC

4 2 2

Welcome to 1/8 Linda Place Kurunjang. A beautiful family home that's been well-loved, looked after, features lots of utility and with a large land size to match. They simply don't make them like this anymore.

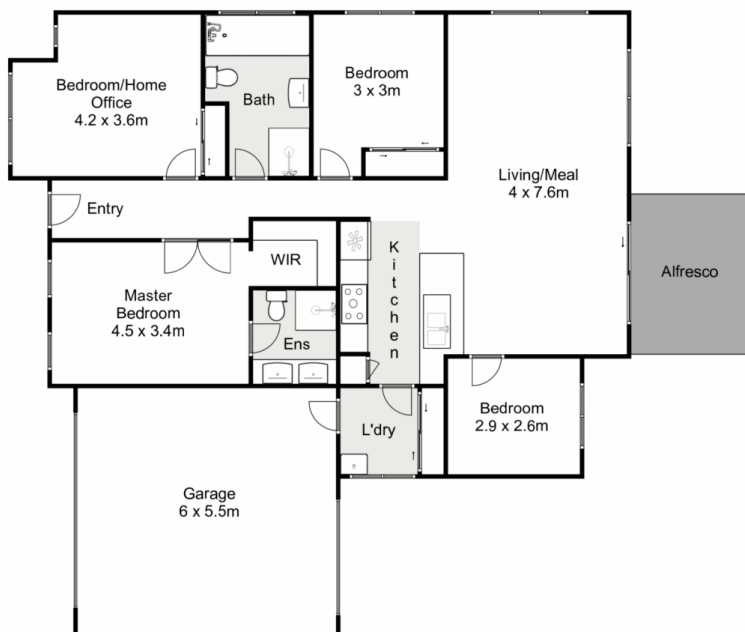
Ideally located within close proximity to public transport, schooling, shops, parklands and freeway access, this property offers the perfect blend of comfort, convenience, accessibility, yet still provides privacy due to its tucked away location. This immaculate home sits on a generous 500m² block (approx.) with ample car accommodation, and drive through access to the backyard, allowing endless possibilities to park vehicles, build a granny flat or expand into an outdoor entertainment area, further making it the perfect place to call home.

Upon entrance you are greeted with a wide hope hallway

Price : \$ 557,500
Land Size : 500 sqm
View : <https://www.ypa.com.au/8011221>



Junior MuBashar
0450 644 606



1/8 Linda Place, Kurunjang

YPA

Whilst every attempt has been made to ensure the accuracy of the floor plan contained here, measurements of doors, windows, rooms and any other items are approximate and no responsibility is taken for any error, omission, or mis-statement. This plan is for illustrative purposes only and should be used as such by any prospective purchaser. The services, systems and appliances shown have not been tested and no guarantee as to their operability or efficiency can be given.

