



1 Argyle Crescent Werribee VIC

3 1 2

Positioned in the heart of Werribee, and within close proximity to the Werribee Train Station (approx. 2.1km), reputable schools, Pacific Werribee (approx. 2.3km) and other amenities Werribee has to offer sits this fantastic opportunity for every buyer in the market. Situated on a generous allotment of approximately 536m² this three bedroom home is sure to attract savvy investors and first home buyers looking at entering the market. Offering the next lucky owner.

Price : \$ 515,000
Land Size : 536 sqm
View : <https://www.ypa.com.au/8012120>

- ? Three bedrooms all with built in robes
- ? Central bathroom with separate toilet
- ? Large living room
- ? Updated kitchen with plenty of storage space overlooking the meals area
- ? Secondary living area with views looking out to the

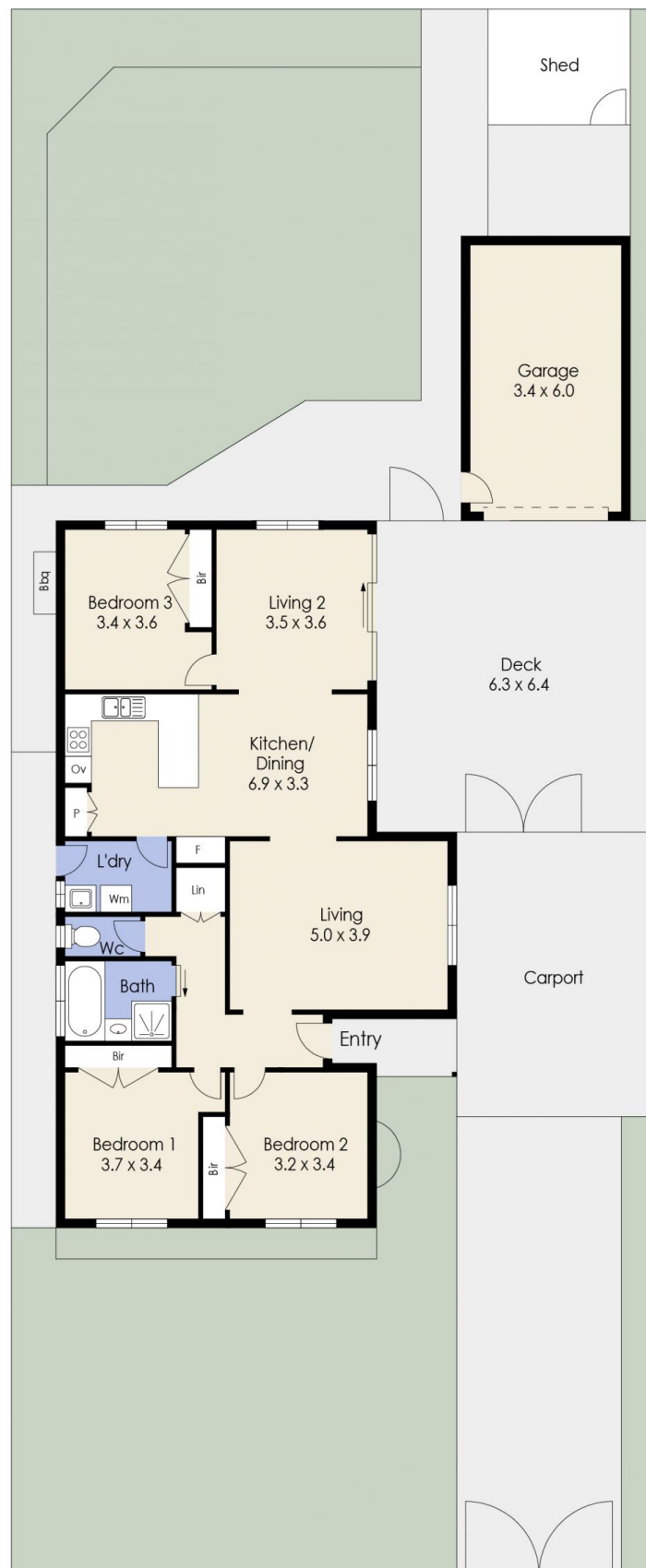


Mitch Smit
0450 913 513



James Christou
0450 733 302

1 Argyle Crescent, WERRIBEE



Whilst every attempt has been made to ensure the accuracy of the floor plan contained here, measurements of doors, windows, rooms and any other items are approximate and no responsibility is taken for any error, omission, or mis-statement. This plan is for illustrative purposes only and should be used as such by any prospective purchaser. The services, systems and appliances shown have not been tested and no guarantee as to their operability or efficiency can be given.