

1 Kalyptos Walk CRANBOURNE VIC

3  1  2 

First home buyers, downsizers or investors surely this one must be on your list to inspect and buy!

Located within close proximity to all amenities, including Cranbourne Park Shopping Centre, Train Station, Cranbourne Park Primary School, Cranbourne West Primary School, quick access to South Gippsland Highway and surrounded by many parks. This charming 3-bedroom, 1-bathroom residence exudes warmth and tranquillity, surrounded by lush gardens.

The heart of the home, its central kitchen, is well-equipped for both everyday dining and entertaining guests. Nestled in a family-friendly neighborhood.

Nature enthusiasts will love the proximity of J&P Cam Reserve and the renowned Royal Botanic Gardens Cranbourne. For the who enjoy a day at the races or

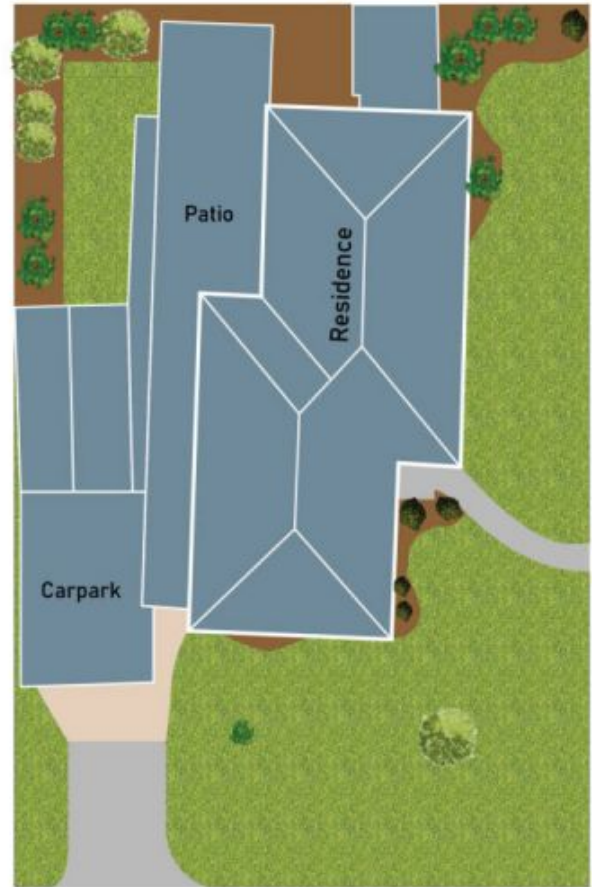
Land Size : 550 sqm

View : <https://www.ypa.com.au/8012385>

Floor Plan



Site Plan



1 Kalyptos Walk, Cranbourne

* Dimensions are approximate and for illustrative purposes only

