



4/15 Hillcrest Drive Westmeadows VIC

3 2 2

This ultra-modern, newly built, double-storey townhouse represents an ideal opportunity to enjoy glamorous living with the convenience of a "lock up and leave lifestyle" in a peaceful and family-friendly neighbourhood, perched on a hilltop, overlooking the sweeping views of the suburb. You have the option to take a leisurely walk or short drive to all your everyday amenities with close proximity to excellent schools, it's not just a place to live but a place to call home. As you step through the front door, you'll be impressed by the high ceilings and greeted with the spacious open-plan layout that seamlessly integrates the living, dining, and kitchen areas, together with timber floors delivering a sense of warmth, inviting you to explore further.

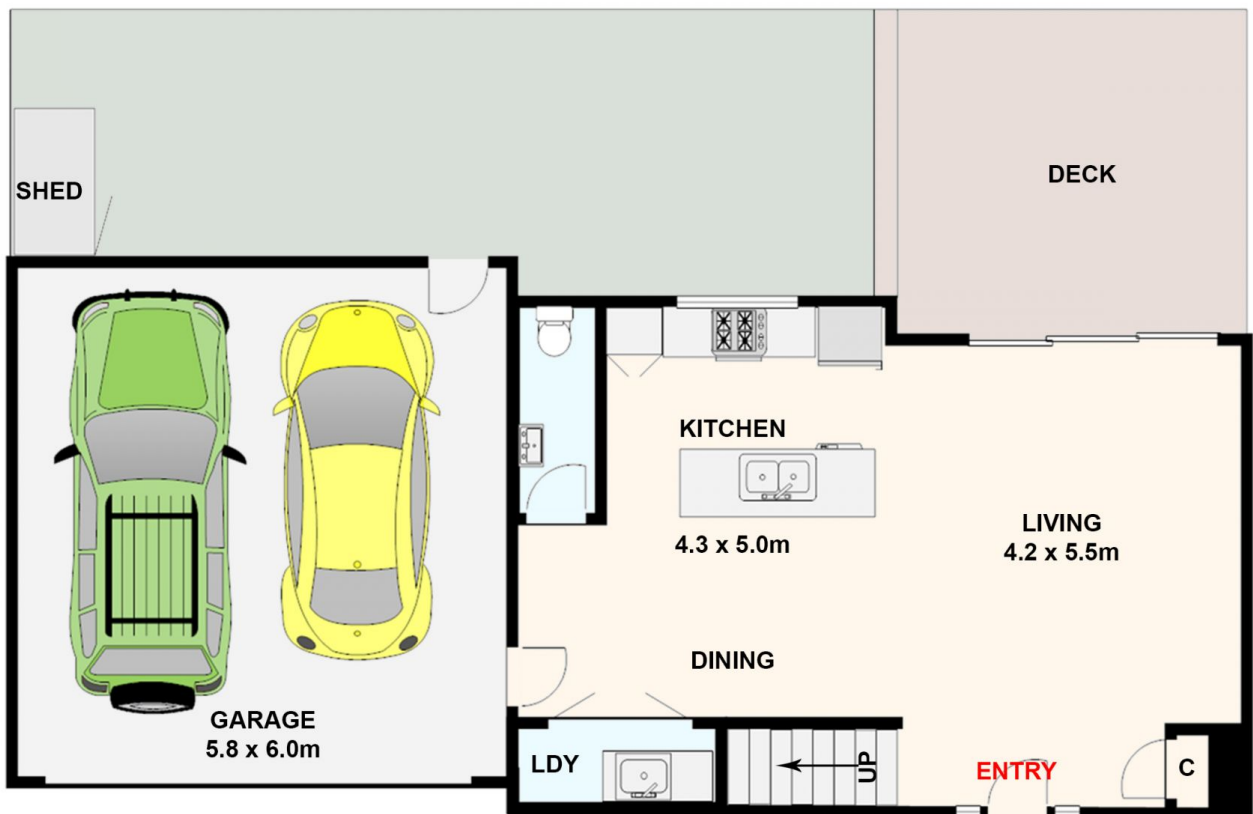
Price : \$ 620,000

View : <https://www.ypa.com.au/8012906>



Michael Sassine
0421 023 243

- On the upper level, the 3 bedrooms are enhanced with plantation shutters and plush carpeting for added comfort. The master bedroom boasts a full ensuite, while the central



4/15 Hillcrest Drive, Westmeadows.
All data and dimensions shown in this sketch are approximate.