



**2/34-36 Vaucluse Avenue Gladstone Park VIC**

**2** **1** **1**

It's hard to beat the curb side appeal of this beautifully designed, two-storey townhouse, nestled in the heart of Gladstone Park. A prime location providing easy access and added convenience to all your essential amenities with bus transport on nearby Carrick Drive and playground right across the road, along with nearby reserves.

Boasting a meticulously maintained interior and thoughtfully designed with high ceilings, offering a spacious and well utilised floorplan, this residence caters effortlessly to the tastes of both first-time homebuyers and savvy investors alike, delivering minimal upkeep and without any owner's corporation fees.

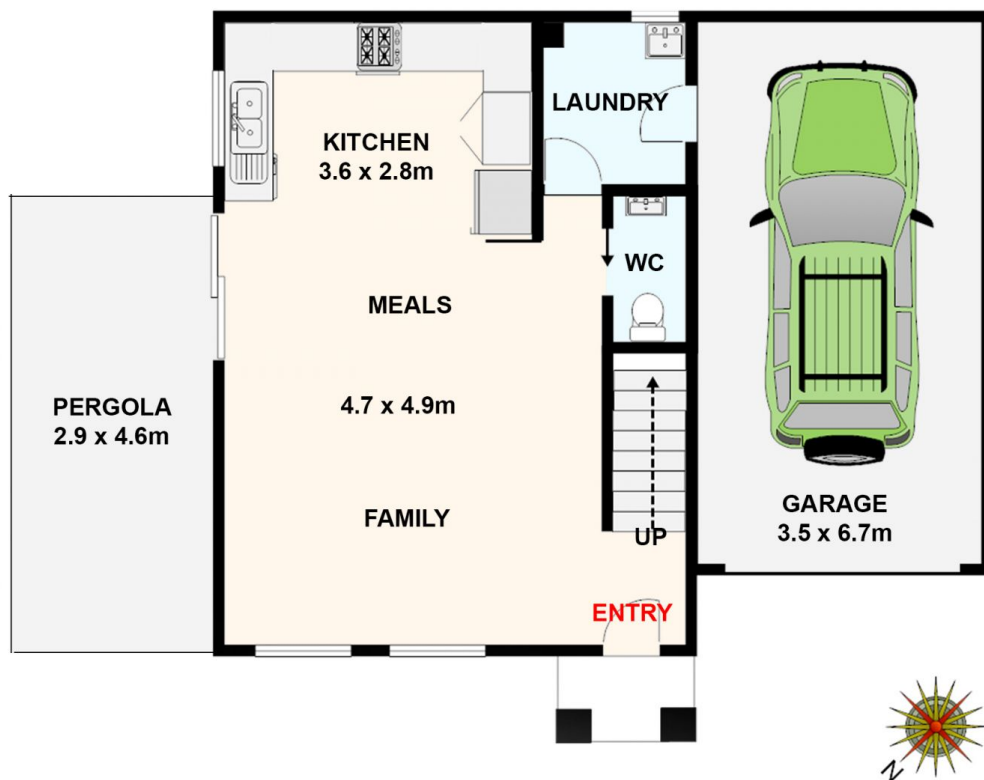
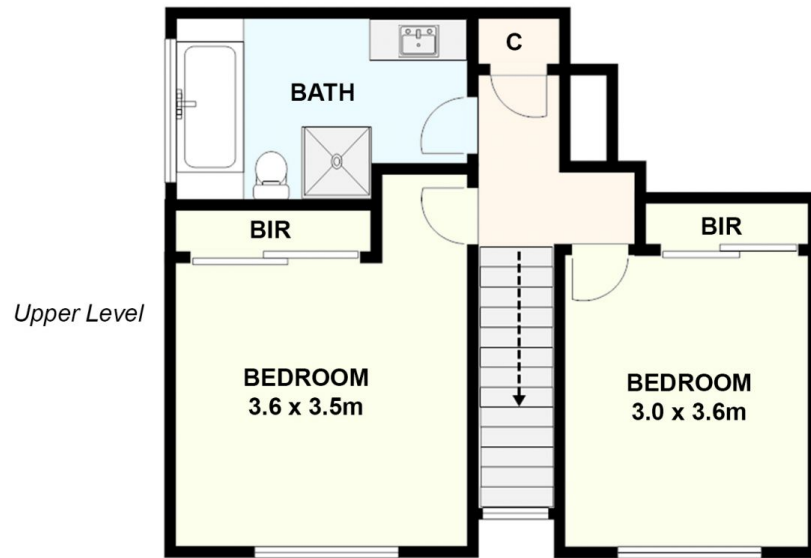
- As you enter you're welcomed to a light-filled open-plan kitchen, meals and living area. Alongside this, the stylish, well-appointed kitchen equipped with stainless steel

**Price** : \$ 570,000

**View** : <https://www.ypa.com.au/8012990>



**Michael Sassine**  
**0421 023 243**



**2/34-36 Vaucluse Avenue, Gladstone Park.**  
*All data and dimensions shown in this sketch are approximate.*