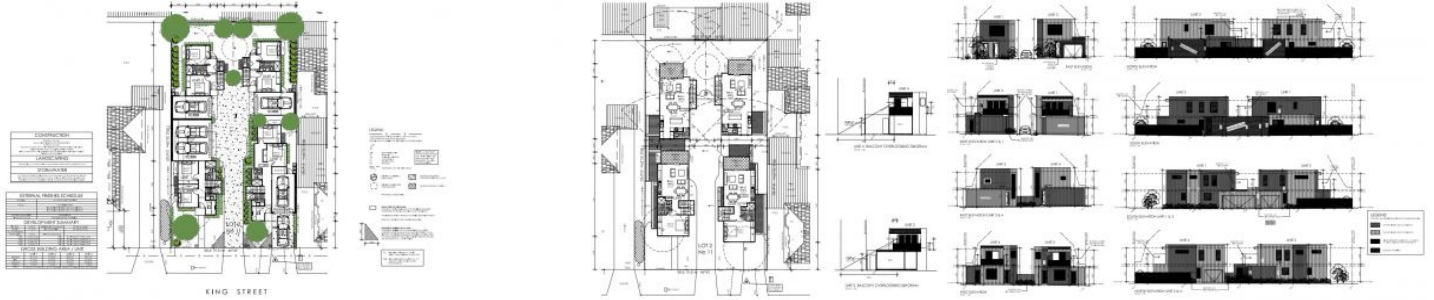


Please note that all dimensions are approximate.



11 King Street Werribee VIC

Introducing an impressive and rare opportunity to acquire a 694m² ideally positioned near all amenities in a highly sought-after neighbourhood. This location presents an exceptional opportunity for families to build their dream home or investors and developers alike.

The potential of this land is limitless, featuring proposed development drawings for four townhouses with contemporary designs, luxury finishes, and private landscaped gardens. providing an abundance of space and comfort for its residents.

The property's location is unbeatable, providing convenient access to a

Price : \$ 708,000
Land Size : 694 sqm
View : <https://www.ypa.com.au/8017533>



James Antonio
0401 889 248



Dane Bouch
0499 655 382