



2 Bottlebrush Drive Hoppers Crossing VIC

4 2 2

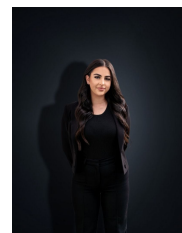
For an astute buyer, the possibilities here are endless. This versatile opportunity is sure to impress investors and owner occupiers alike. Updated throughout this neat and tidy home leaves nothing to the next owner to complete and is move in ready! This property is sure to spark your interest on a spacious allotment of approx. 668 sq m.

Price : \$ 635,000
Land Size : 669 sqm
View : <https://www.ypa.com.au/8017697>

Ideally located within walking distance to Hogans Corner Shopping Centre, Bus Stops, Parks & reputable schools including St James Primary School you are also positioned a short distance to Freeway Access and approximately a five-minute drive to Pacific Werribee. The spacious floor plan offers:



Kirsty Cunningham
0414 344 475



Stefanie Zahra
0406871722

- ? Four bedrooms with built in robes
- ? Master bedroom with ensuite
- ? Central bathroom

2 Bottlebrush Drive, HOPPERS CROSSING



Whilst every attempt has been made to ensure the accuracy of the floor plan contained here, measurements of doors, windows, rooms and any other items are approximate and no responsibility is taken for any error, omission, or mis-statement. This plan is for illustrative purposes only and should be used as such by any prospective purchaser. The services, systems and appliances shown have not been tested and no guarantee as to their operability or efficiency can be given.