

2 Curlew Close Melton VIC

3 1 2

Located in central Melton and within walking distance to High Street, Woodgrove Shopping Centre, Melton Waves, schools and public transport is this flawlessly renovated home ready for you to move straight in!

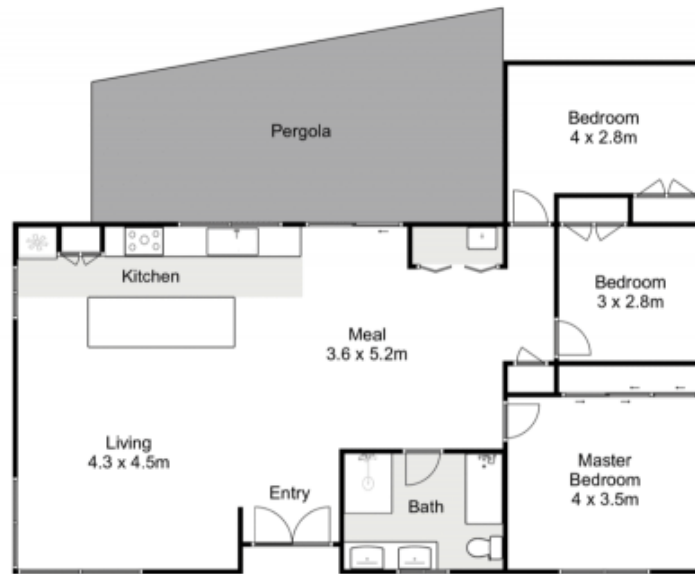
Displaying a blend of captivating and modern features throughout, this ultra modern renovation is sure to impress. Comprising of three large bedrooms with built in wardrobes and a stunning bathroom with large shower, full size bath and Italian marble top vanity, lined with quality porcelain tiles.

The heart of the home wraps around a gorgeous kitchen with matt black finishes, 900mm freestanding appliances and huge island bench that has unobstructed views of the sunlit living and dining areas.

Price : \$499,900 - \$549,000
Land Size : 580 sqm
View : <https://www.ypa.com.au/8017919>



Mark Edwards
0422 017 068



2 Curlew Close, Melton



Whilst every attempt has been made to ensure the accuracy of the floor plan contained here, measurements of doors, windows, rooms and any other items are approximate and no responsibility is taken for any error, omission, or mis-statement. This plan is for illustrative purposes only and should be used as such by any prospective purchaser. The services, systems and appliances shown have not been tested and no guarantee as to their operability or efficiency can be given.

open2view.com.au