



### 17 Lores Drive BROOKFIELD VIC

4 2 2

. Situated near parks, Shopping Centres, Melton South Village, Melton South Train Station, and various schools, this property puts convenience right at your doorstep.

Upon entry, you'll be welcomed into the expansive formal lounge, offering ample space for family gatherings. The generously sized master bedroom, positioned at the front of the home, provides optimal comfort with a sizable walk-in robe and well-appointed ensuite. The remaining three bedrooms feature built-in robes and are serviced by a modern central bathroom.

. The heart of the home unveils a stunning kitchen, equipped with an abundance of bench and cupboard space, a dishwasher, and a gas cooktop. Seamlessly integrated with the spacious open-plan meals and living area, this space is perfect for family living or entertaining.

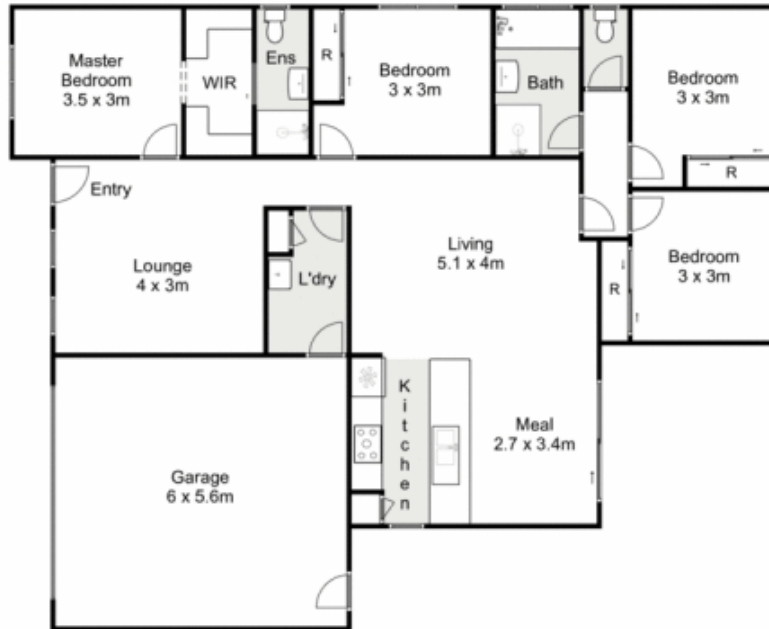
. Outside, a concreted patio area overlooks the expansive backyard, offering ample room for pets and children to play.

**Land Size** : 504 sqm

**View** : <https://www.ypa.com.au/8018039>



**Danielle Frew**  
0414 346 108



## 17 Lores Drive, Brookfield

ypa

Whilst every attempt has been made to ensure the accuracy of the floor plan contained here, measurements of doors, windows, rooms and any other items are approximate and no responsibility is taken for any error, omission, or mis-statement. This plan is for illustrative purposes only and should be used as such by any prospective purchaser. The services, systems and appliances shown have not been tested and no guarantee as to their operability or efficiency can be given.

