



5 Mayfair Close Gladstone Park VIC

3 1 2

Welcome to a stunning residence nestled in one of Gladstone Park's most sought-after cul-de-sacs. This contemporary home perfectly balances tranquillity, modern convenience, and timeless elegance, making it an ideal sanctuary for discerning buyers.

Price : \$ 705,000
Land Size : 564 sqm
View : <https://www.ypa.com.au/8019903>

Key Features:

? **Elegant Facade:** Set back from the street, this home exudes charm and sophistication with its stylish, inviting exterior.

? **Gourmet Kitchen:** The upgraded kitchen boasts top-of-the-line appliances and a sleek splashback, creating a perfect space for culinary delights.

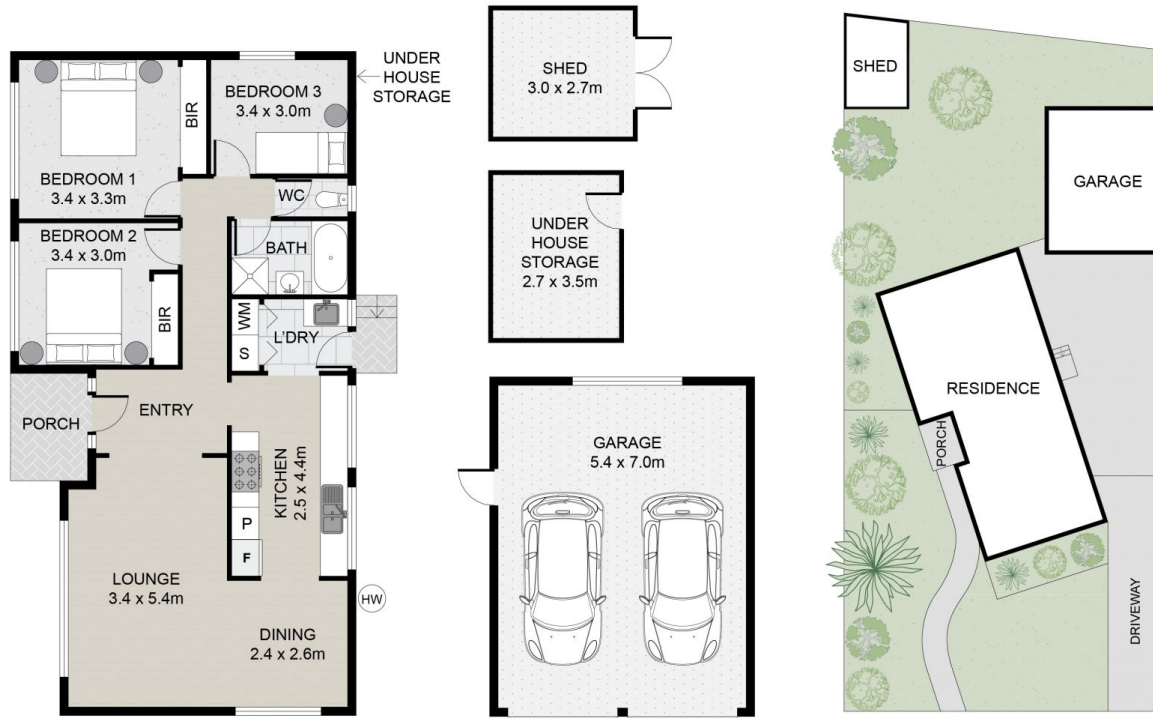
? **Luxurious Bathroom:** Indulge in the modern bathroom featuring a spacious shower and a relaxing bath, designed for ultimate comfort.



Jake Lisner
0437 399 908



Luke Albioli
0403 700 003



Scale in metres. Indicative only. Dimensions are approximate. All information contained herein is gathered from sources we believe to be reliable. However we cannot guarantee its accuracy and interested persons should rely on their own enquiries.