

37 Jonah Parade Deer Park VIC

4  2  2 

Nestled in the highly desirable Deer Park suburb, this meticulously maintained property exudes perfection. Ideally located, it is close to local primary and secondary schools, Brimbank Shopping Centre, public transport, and offers easy access to the Western Highway. Scenic walking tracks add to the appeal, blending convenience with natural beauty.

Presented by YPA Caroline Springs, this residence goes beyond the ordinary, seamlessly merging practicality with comfort. The meticulous attention to detail showcases the care and devotion invested in the property. Situated in a prestigious community, this home is not just a residence but a haven, offering a superior living experience with its blend of convenience and tranquility.

Exploring this home reveals its unique charm and

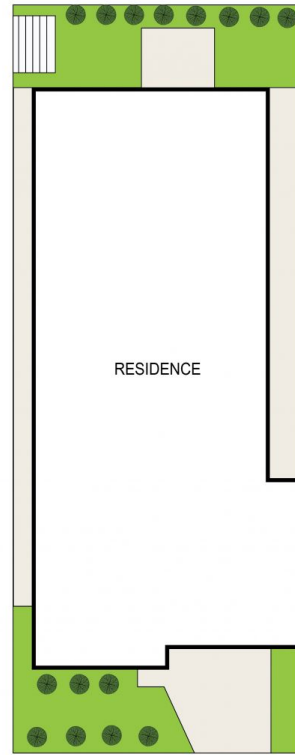
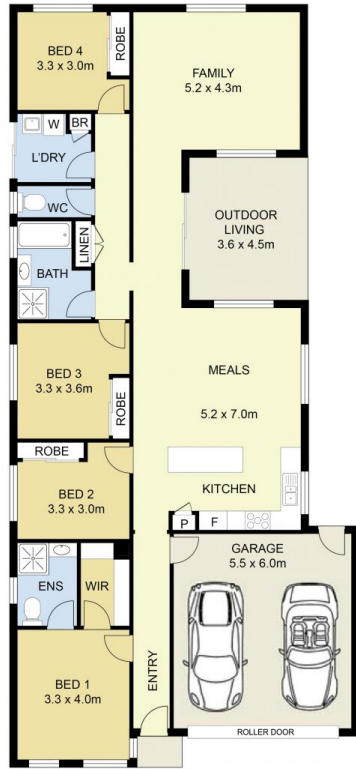
Price : \$ 670,000
Land Size : 383 sqm
View : <https://www.ypa.com.au/8020156>



Stephen Azzopardi
0402 012 554



Andrew Migliorisi
0432 526 844



SITE PLAN
(NOT TO SCALE)



37 Jonah Parade, Deer Park

DISCLAIMER : ALL DIMENSIONS ARE AN APPROXIMATION ONLY AND NO GUARANTEE IS GIVEN WITH RESPECT TO ACCURACY.