

2/11 Morgan Street Rosebud VIC

3 2 2

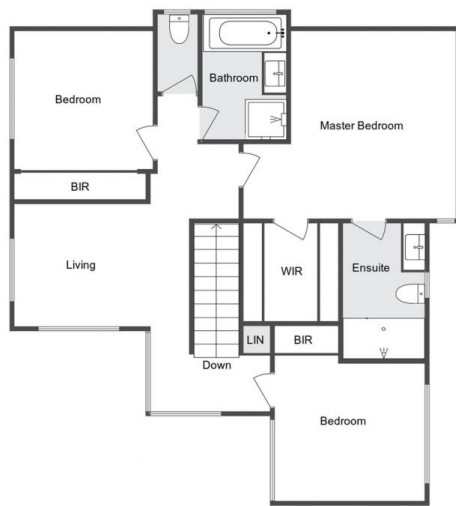
YPA Rye is proud to present this amazing 5 Month old townhouse that has everything you would expect from a High End Builder.

View : <https://www.ypa.com.au/8021396>

Unit 2 Offers
 Master bedroom with ensuite
 2 more large Bedrooms with Built In Robes
 Large Study
 Huge Kitchen with a Pantry big enough to store a years worth of food!
 3 Living Areas
 Solar Inc Solar HWS
 Split Systems in living areas and bedrooms
 Private Driveway
 Double Garage
 \$750 Per Week



Jessica Trahar
 0416 737 904



Upper Level



Main Level

2/11 Morgan Street Rosebud

All Plans are an artistic representation and should not be relied on. 3D Plans will contain elements that do not exist and are for inspiration only. All measurements, dimensions and illustrated areas are approximate. This Plan has No Warranty and it is the responsibility of all interested parties to verify all data depicted and omitted.
Marshall Commercial Photography 0410 591 779 petemarshall@bigpond.com