



12 Manning Boulevard Darley VIC

4 2 4

Discover unparalleled luxury and modern sophistication in this exquisite home located in the prestigious Manning Estate. This property boasts impeccable finishes and an array of impressive upgrades that must be seen to be believed. Situated on an expansive 4001m² (approx.) block, this residence offers an exceptional blend of space, comfort, and style.

This immaculately presented home features four spacious bedrooms, including a stunning master suite with bay windows, a fully renovated modern ensuite, and a large walk-in wardrobe. The central living area is designed to allow natural light to flood the space, highlighting the open plan design. Large windows frame the serene private views that the property offers.

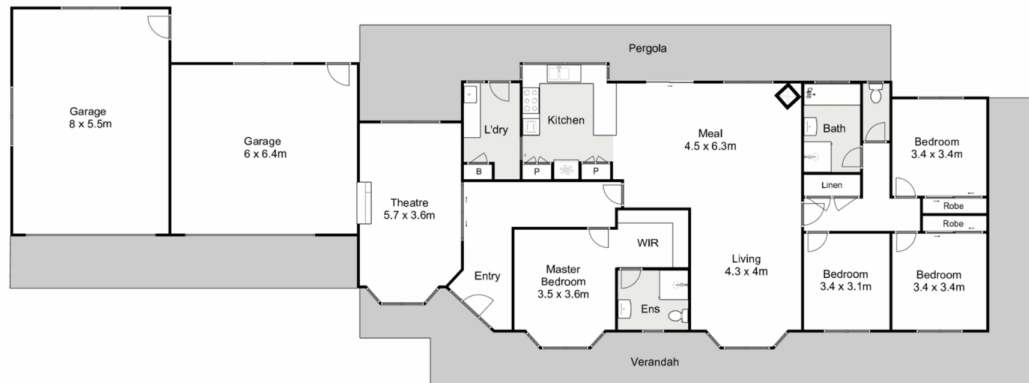
The large kitchen is a chef's dream, featuring stone benchtops, dual 600mm ovens, and a large gas cooktop. The extensive bench space seamlessly integrates with the

Land Size : 4001 sqm

View : <https://www.ypa.com.au/8021781>



Shane O'Brien
0431 766 082



12 Manning Boulevard, Darley

ypa

Whilst every attempt has been made to ensure the accuracy of the floor plan contained here, measurements of doors, windows, rooms and any other items are approximate and no responsibility is taken for any error, omission, or mis-statement. This plan is for illustrative purposes only and should be used as such by any prospective purchaser. The services, systems and appliances shown have not been tested and no guarantee as to their operability or efficiency can be given.

