



## 23 Citreus Circuit BROOKFIELD VIC

4 2 2

This stunning family home is positioned in the highly sought-after Botanica Springs Estate in Brookfield on a massive 670m<sup>2</sup> (approx.) parcel of land, nearby to all of Brookfield has to offer such as local parklands, newly opened Binap Primary School, public transport, shops and easy freeway access.

The quality is evident from the moment you arrive at the front of the property with a bold façade and feature stacker stone and stunning landscaping leading you to the front door of this beautiful home. Upon entry you are met with soaring ceilings and gorgeous floorboards that flow throughout.

The huge master bedroom situated at the front of the home offers an abundance of space. Further complimented by large timber windows, a large walk-in robe and a stunning

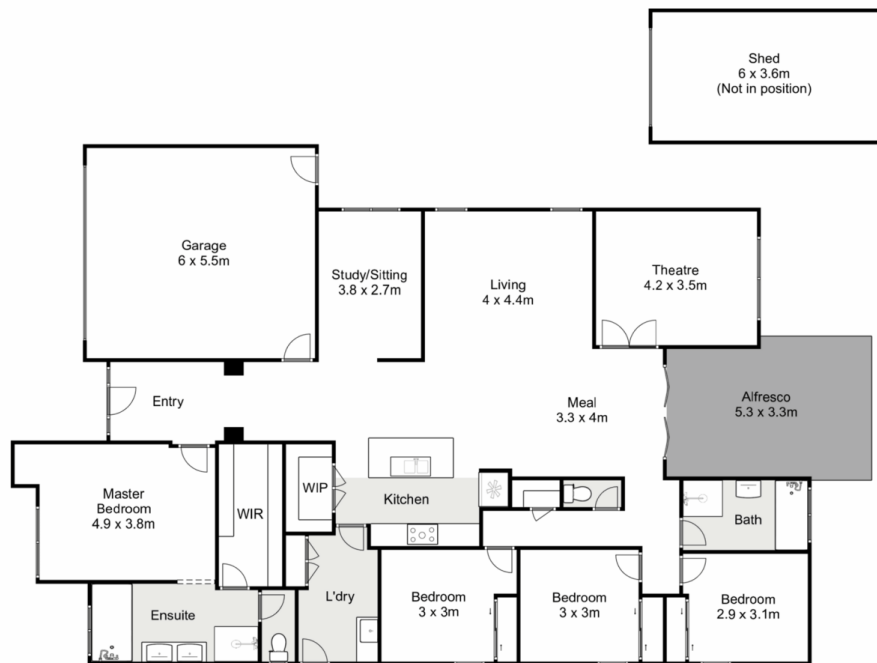
**Price** : \$ 750,000  
**Land Size** : 670 sqm  
**View** : <https://www.ypa.com.au/8023253>



**Shane Spiteri**  
 0488 980 115



**Ricky Frew**  
 0402 007 100



## 23 Citreus Circuit, Brookfield

ypa

Whilst every attempt has been made to ensure the accuracy of the floor plan contained here, measurements of doors, windows, rooms and any other items are approximate and no responsibility is taken for any error, omission, or mis-statement. This plan is for illustrative purposes only and should be used as such by any prospective purchaser. The services, systems and appliances shown have not been tested and no guarantee as to their operability or efficiency can be given.

