



62 Moorookyle Avenue Tarneit VIC

4 2 2

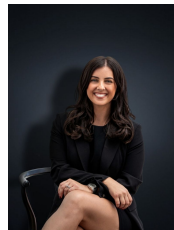
With a seamless flowing floor plan this spacious home would make a perfect entry into the market with an ease to reach local attractions and amenities. Located nearby to local parks, Moorookyle Country Club with inclusions of a gym, outdoor pool, tennis courts, BBQ facilities and a function room, public transport and approximately:

- ? 1km to Riverdale Shopping Centre
- ? 2.4km Tarneit Gardens Shopping Centre
- ? 1.3km Tarneit Rise Primary School
- ? 3.2km to Tarneit P-9 College
- ? 4.7km to Tarneit Railway Station

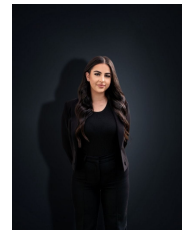
Additionally, the home full of light and spacious offers;

- ? Four bedrooms
- ? Master bedroom with walk in robe and ensuite

Price : \$ 605,000
Land Size : 388 sqm
View : <https://www.ypa.com.au/8023367>



Kirsty Cunningham
0414 344 475



Stefanie Zahra
0406 871 722

62 Moorookyle Avenue, TARNEIT



Whilst every attempt has been made to ensure the accuracy of the floor plan contained here, measurements of doors, windows, rooms and any other items are approximate and no responsibility is taken for any error, omission, or mis-statement. This plan is for illustrative purposes only and should be used as such by any prospective purchaser. The services, systems and appliances shown have not been tested and no guarantee as to their operability or efficiency can be given.