



23 Bloomsbury Drive Taylors Hill VIC

4 2 2

This Outstanding Family Residence of approx 30 squares is perfectly located to all facilities. Special features include.

High ceiling, wide entry, large kitchen with heaps of cupboards and 3 separate living areas.

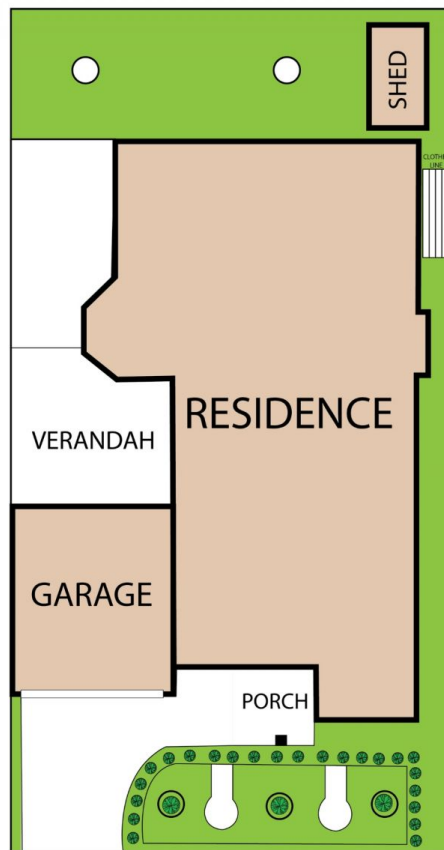
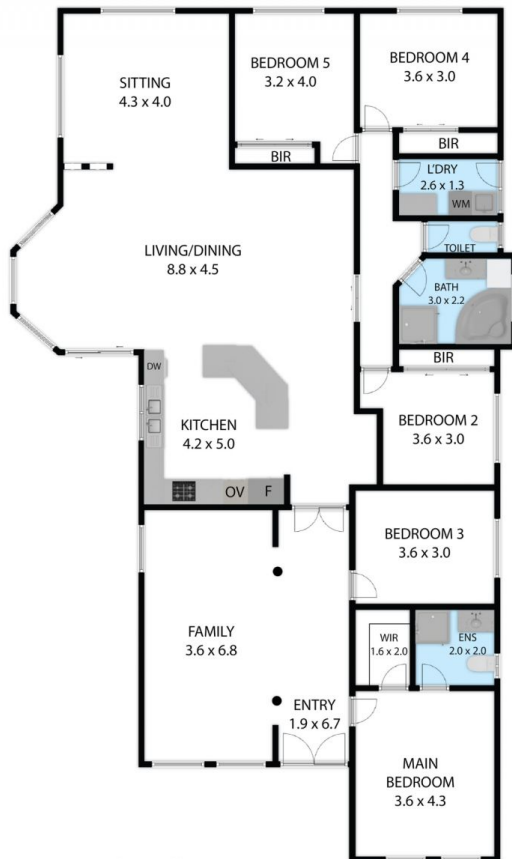
- ? Comprises 4 good size Bedrooms all with BIR & master with full ensuite & wir
- ? Large Formal loungeroom with room for formal guest dining
- ? Separate study/office or suit a 5th bedroom
- ? Huge Open Plan quality kitchen with large familyroom -dining area
- ? Separate Family TV/Rumpus room for day to day entertaining
- ? Tiled bathroom with spa bath & separate laundry
- ? Undercover Patio for private day or night relaxation

Price : \$ 882,000

View : <https://www.ypa.com.au/8024891>



Joe Albioli
0438 133 123



23 Bloomsbury Drive, Taylors Hill 3037

Whilst every attempt has been made to ensure the accuracy of the floor plan contained here, measurements of doors, windows, rooms and any other items are approximate and no responsibility is taken for any error, omission, or misstatement. This plan is for illustrative purposes only and should be used as such by any prospective purchaser.