

## 1/1014 Eyre Street Ballarat Central VIC

2 1 1

Discover the perfect blend of convenience and comfort in this spacious 2-bedroom unit, close to schools, hospitals, the Queen Elizabeth Centre, public transport, the western oval and a short walk from Sturt Street, the perfect opportunity for investors, downsizers or first-home buyers.

The kitchen, which overlooks the private front yard, is accompanied by ample storage and bench space. Flowing into a spacious living and dining area, this residence is intelligently designed to seamlessly accommodate relaxation and entertainment.

Two generously sized bedrooms, each complete with built-in robes, offer ample storage space. The large bathroom is designed for comfort, featuring an oversized shower with ease of access and a toilet.

Enjoy the convenience of a lock-up garage with direct access to the home, providing both security and ease of entry. The property also boasts a charming front yard,

**Price** : \$370,000 - \$400,000

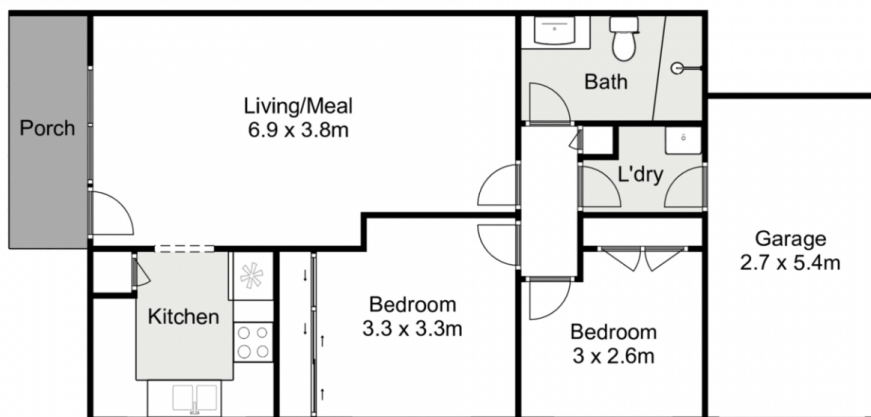
**View** : <https://www.ypa.com.au/8025690>



**Shane O'Brien**  
0431 766 082



**Shandelle Cooper**  
0478 355 688



## 1/1014 Eyre Street, Ballarat Central

ypa

Whilst every attempt has been made to ensure the accuracy of the floor plan contained here, measurements of doors, windows, rooms and any other items are approximate and no responsibility is taken for any error, omission, or mis-statement. This plan is for illustrative purposes only and should be used as such by any prospective purchaser. The services, systems and appliances shown have not been tested and no guarantee as to their operability or efficiency can be given.

