



2/26 Rogers Street PAKENHAM VIC

2 1 1

Nestled just off the vibrant Main Street of Pakenham, this completed unit presents a prime opportunity for modern suburban living. Boasting two spacious bedrooms and a well-appointed semi ensuite, this unit offers comfort and convenience in equal measure, complete with a single garage for added practicality.

Ideally situated within walking distance of essential amenities, closer to heritage springs shopping centre residents will appreciate easy access to public transport, medical facilities, the bustling Pakenham Marketplace, and reputable schools.

Step into this luxury residence featuring a kitchen adorned with stone benchtops, complemented by contemporary downlights throughout. Enjoy year-round comfort with the convenience of gas ducted heating and split system air

Price : \$ 520,000
Land Size : 175 sqm
View : <https://www.ypa.com.au/8029140>



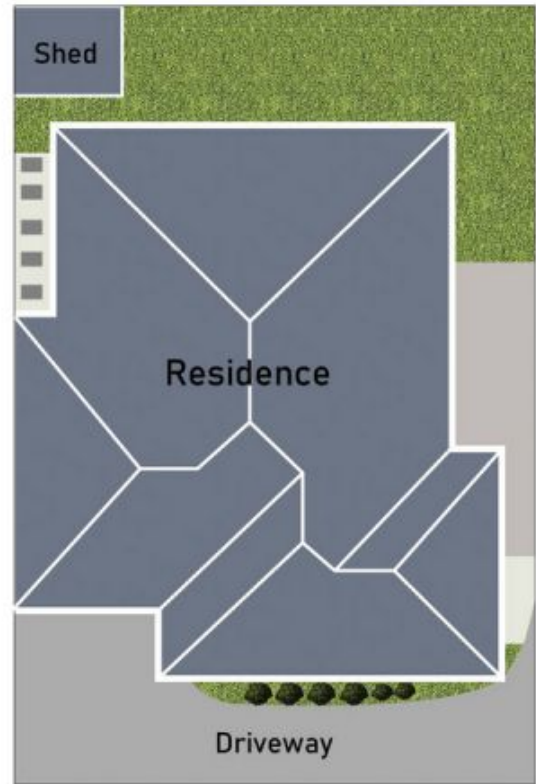
Frances Cutri
0423 485 688

Vikram Chandel
0430 055 933

Floor Plan



Site Plan



2/26 Rogers Street Pakenham

* Dimensions are approximate and for illustrative purposes only

