

## 46 Silverwood Drive Greenvale VIC

Set on a well proportioned 392m<sup>2</sup> (14m x 28m) flat allotment, this 7 year old home of approximately 25 squares under roof-line offers an ideal set-up for singles, couples, families and down-sizers alike!

Not a cent to spend, step inside to a classic layout with the spacious Master suite (WIR + ensuite) zoned up front, two further bedrooms fitted with BIR's, main bathroom, separate laundry and a huge open plan kitchen/meals/family area the absolute highlight!

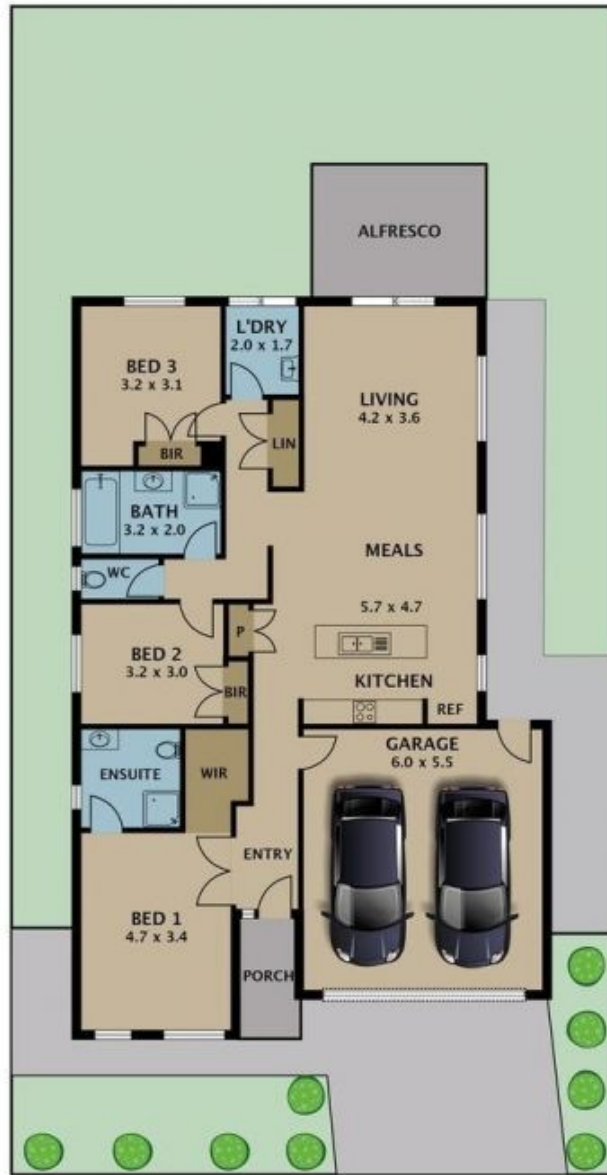
But wait?there's more! Step out back to a delightful covered al-fresco "room" fitted with 3 x sets of sliding doors and blinds, ensuring all year-round comfort. Not to mention internal access to NOT a single, but "DOUBLE" auto garage with abundant storage shelving and further door access to the rear.

3 2 2

**Price** : Private Sale | \$729k - \$735k  
**Land Size** : 392 sqm  
**View** : <https://www.ypa.com.au/8029427>



**Jason Padula**  
0402 149 436



Disclaimer. Please note plans are indicative only and not drawn to exact scale. All dimensions are approximate. Potential buyers view the property in person.