



1/20 Alameda Avenue Mornington VIC

2  **1**  **1** 

This charming 2-bedroom brick veneer unit is one of three well-maintained residences, offering privacy, safety and best of all, no body corporate fees. Perfectly situated to take advantage of Mornington's great amenities, this home offers unparalleled access to Bentons Square, Mornington Main Street and the beach.

Step inside to discover a floorplan designed for comfort, ease and an abundance of natural light. The well-appointed kitchen boasts stone veneer benchtops and a five-burner gas cooktop, seamlessly flowing into the dining area, where you can step out into the decked courtyard to enjoy your morning coffee. The master bedroom features a walk-in robe attached to a Jack and Jill ensuite with a separate toilet, while the second bedroom offers built-in robes. Additional amenities include a single lock-up garage with rear access, a split system, and ceiling fans.

Price : \$580,000 - \$620,000

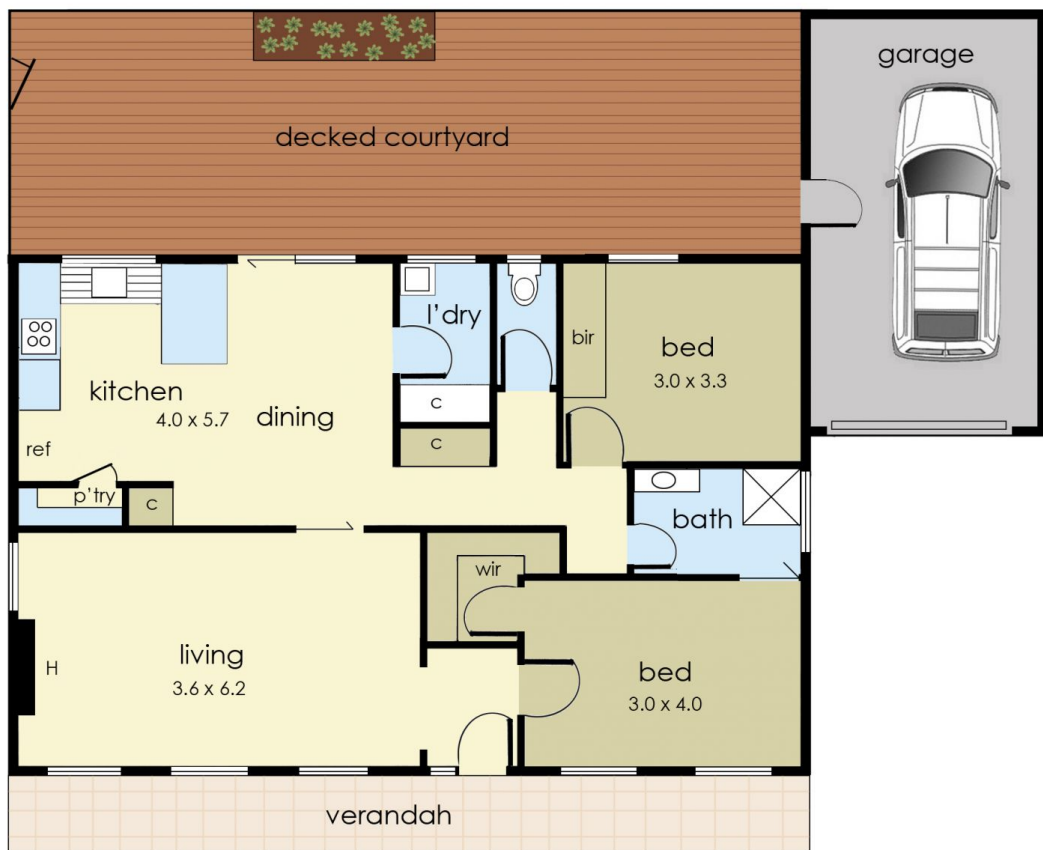
View : <https://www.ypa.com.au/8033160>



Chris Fahl
0404 668 818



Pietra Vieira
0452 569 994



1/20 Alameda Avenue, Mornington

© Produced by DND Floor Plans

This floorplan is for illustration purposes only and no warranty is given to its accuracy. Purchasers are advised to carry out their own investigations.