



## 11 Swans Road Darley VIC

4 2 8

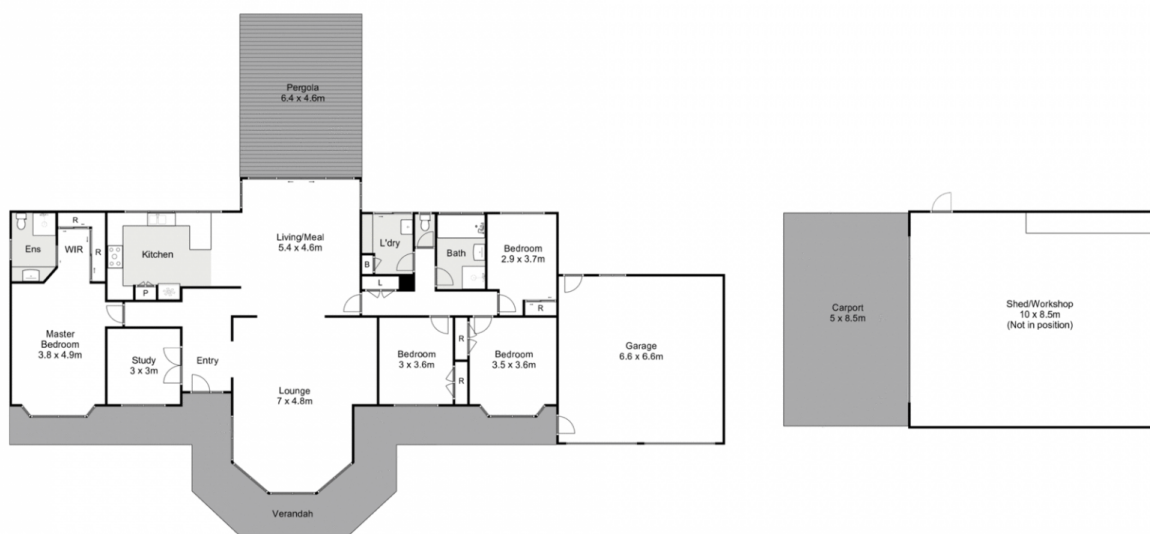
Designed and built for today's lifestyle, this iconic property seamlessly blends luxurious elegance with rural lifestyle. Located in the serene and welcoming community of Darley, this residence sets a new benchmark in home design. The striking and bold façade, surrounded by an expansive 4830m<sup>2</sup> (approx.) yard, introduces you to a four-bedroom, two-bathroom masterpiece, just a minute's drive from the Bacchus Marsh Golf Course and the Lerderderg River walking track.

Upon entering this stunning home, you are welcomed into a sun-drenched atmosphere with modern upgrades throughout. A perfect neutral palette is enhanced by luxury inclusions that are sure to impress. The master suite features a large walk-in wardrobe and ensuite, while the additional three bedrooms are generously sized with built-in wardrobes. The home offers two separate living areas plus a study, and a beautiful kitchen boasting 40mm stone

**Price** : \$1,199,000 - \$1,279,000  
**Land Size** : 4830 sqm  
**View** : <https://www.ypa.com.au/8036871>



**Shane O'Brien**  
 0431 766 082



## 11 Swans Road, Darley

ypa

Whilst every attempt has been made to ensure the accuracy of the floor plan contained here, measurements of doors, windows, rooms and any other items are approximate and no responsibility is taken for any error, omission, or mis-statement. This plan is for illustrative purposes only and should be used as such by any prospective purchaser. The services, systems and appliances shown have not been tested and no guarantee as to their operability or efficiency can be given.

