

7 Wycombe Road HARKNESS VIC

4  2  2 

This outstanding home is perfectly located in the highly sought-after Willandra Estate in Harkness within close proximity to schools of all levels including the brand new Melton Christian College Toolern Vale campus, shopping complexes, public transport, parklands, walking tracks and so much more future developments coming, making it the ideal opportunity for families, investors and first home buyers alike.

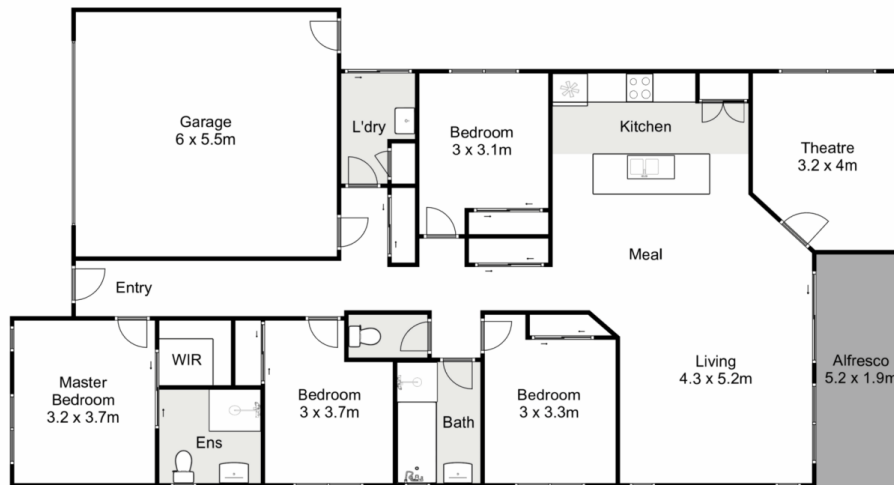
You will be instantly amazed by the curb appeal of this property featuring a low maintenance front yard with beautiful gardens and exposed aggregate concrete leading you up to the front entrance. Inside will also continue impress you with 9 foot ceilings, upgraded architraves, bulk heads, wall niches and a perfect neutral colour palette.

The spacious and light filled master bedroom sits at the

Price : \$ 580,000
Land Size : 354 sqm
View : <https://www.ypa.com.au/8039451>



Shane Spiteri
0488 980 115



7 Wycombe Road, Harkness

YPA

Whilst every attempt has been made to ensure the accuracy of the floor plan contained here, measurements of doors, windows, rooms and any other items are approximate and no responsibility is taken for any error, omission, or mis-statement. This plan is for illustrative purposes only and should be used as such by any prospective purchaser. The services, systems and appliances shown have not been tested and no guarantee as to their operability or efficiency can be given.

