

54 Selbourne Street Strathulloh VIC

4 2 2

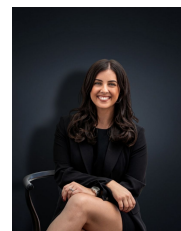
Positioned in the highly sought-after Millstone Estate in Strathulloh and within close proximity to new shopping complex, Cobblebank Train Station, beautiful parklands, brand new primary school, future hospital and so much more, this stunning home is beautifully presented and ready for one lucky buyer to secure as a perfect family home.

Price : \$ 625,000
Land Size : 380 sqm
View : <https://www.ypa.com.au/8042946>

- The home presented neat as a pin offers the next owner;
- ? Master bedroom with walk in robe and en suite
- ? Remaining three bedrooms with built in robes
- ? Formal living upon entry
- ? Large kitchen with extended Stone bench tops and quality appliances
- ? Open plan Kitchen, meals and living space
- ? Separate laundry with side access
- ? Fully landscaped front and back with minimal upkeep

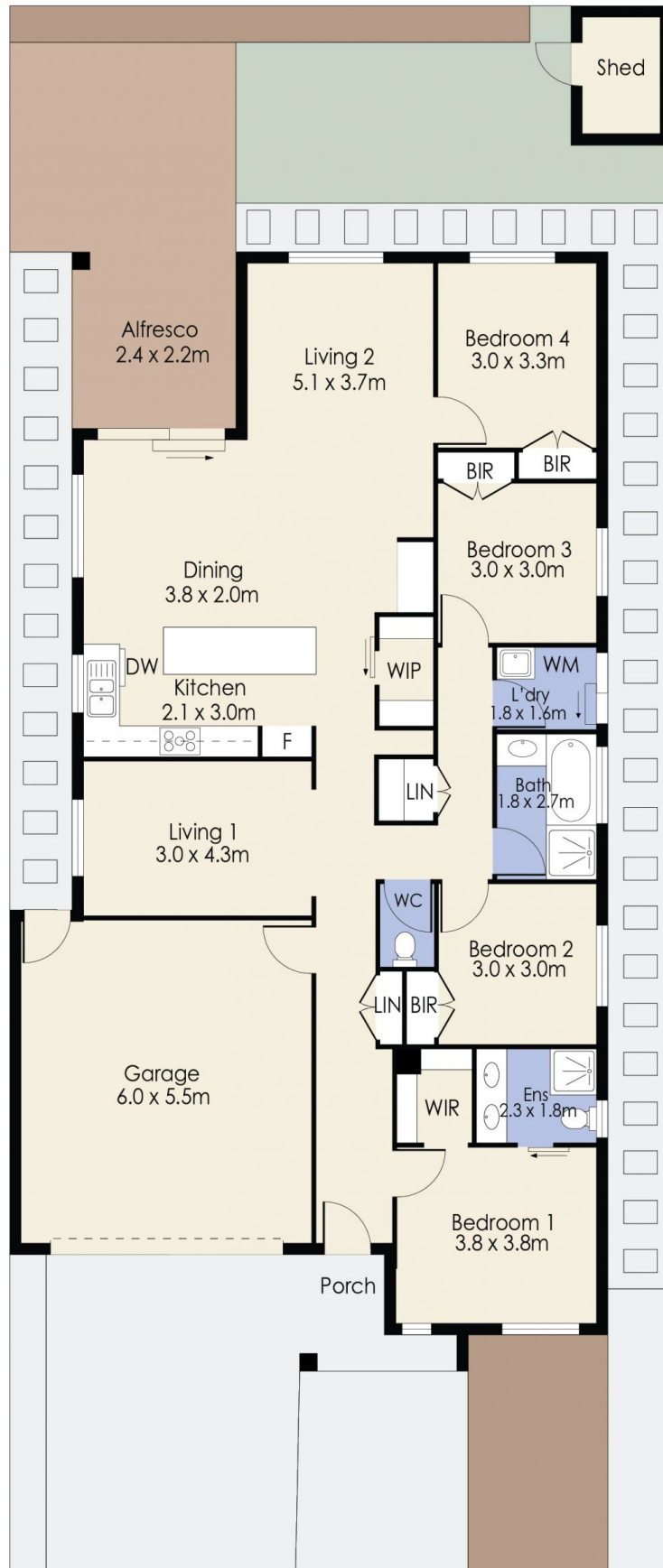


James Christou
0450 733 302



Kirsty Cunningham
0414 344 475

54 Selbourne Street, STRATHTULLOH



Whilst every attempt has been made to ensure the accuracy of the floor plan contained here, measurements of doors, windows, rooms and any other items are approximate and no responsibility is taken for any error, omission, or mis-statement. This plan is for illustrative purposes only and should be used as such by any prospective purchaser. The services, systems and appliances shown have not been tested and no guarantee as to their operability or efficiency can be given.